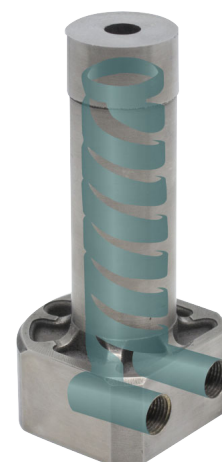
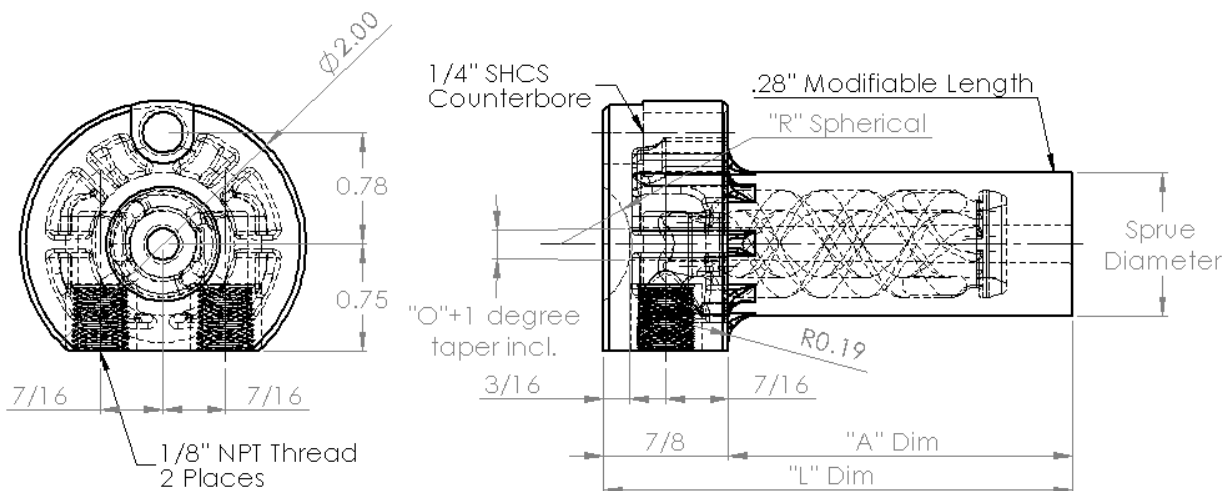


Conformal Cooled Sprue Bushings

- Reduce cycle time up to 30%
- Retrofit replacement for B and U series sprue bushings
- Manufactured from H-13 Tool Steel
- Ideal for small parts, where sprue mass is limiting cycle time
- Hardened and polished
- Custom sizes available at customcomponents@pcs-company.com



SPECIFICATIONS	
Head Diameter	2.000
Body Diameter	1.00 OR 0.750
Body to Shoulder Radius	0.18
Head Thickness	0.875
O Orifice Tolerance	+0.010 / -.000
Hardness	46 - 48 HRc
Material	H-13 Tool Steel
Unit of Measure	Inch



A DIM	L LENGTH	DIAMETER	O ORIFICE	
			5/32"	7/32"
			RADIUS	
			1/2"	1/2"
1-29/32	2-25/32	.750	U-602-51C	-
2-13/32	3-9/32	.750	U-603-51C	U-603-71C
1-29/32	3-25/32	.750	U-604-51C	-
1-29/32	2-25/32	1.00	B-602-51C	B-602-71C
2-13/32	3-9/32	1.00	B-603-51C	B-603-71C
2-29/32	3-25/32	1.00	B-604-51C	B-604-71C