



Turn To The Industry Experts

Pureblast™ Dry Ice Cleaning Equipment



cryopure

perfecting purity

Compact and affordable machine for cleaning tooling in the plastic injection molding industry



Environmentally friendly -
Dry Ice *"Blast"* Surface Cleaning

Dry Ice Cleaning has many benefits

1. Cleaning with a Natural Substance

Dry Ice Blasting uses Dry Ice Pellets made from the same substance used to carbonate beverages. This method does not generate secondary waste as does sand, soda, water, or grit cleaning. Dry Ice Blasting also replaces chemical and solvent based cleaning.

2. Safe on Electrical

This versatile process cleans heavy buildup without damage to sensitive areas like electrical components, switches, wiring, photo electric sensors, and more.

3. A Thorough, Deeper Cleaning

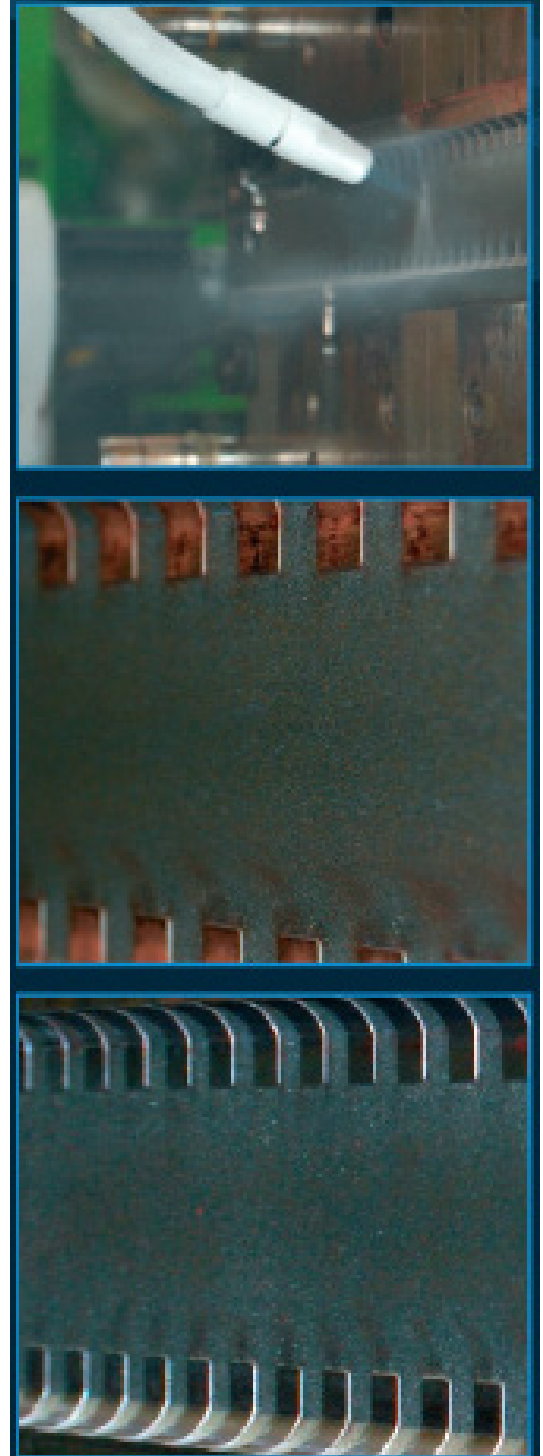
Since Dry Ice Pellets manage to reach every nook and corner of the tooling it cleans more deeply and effectively.

4. No Damage

Dry Ice Blasting is completely dry, non-abrasive, non-toxic and non-corrosive. It quickly removes most contaminants without damage to switches, panels, lines, tubes, wiring or belts, HVAC equipment and is safe to use on electrical.

5. No Down Time

The process is very fast and dry. The dry ice disappears on contact and can be performed on-line without disassembly and without need for drying time.



PureBlast™ Mini

The PureBlast™ Mini is the ideal choice for those companies who would like to have the opportunity to clean small parts and surfaces, without having the usual constraint for a high air flow compressor. Daily maintenance on processing equipment and electronics or the occasional cleaning of parts is easily carried out with the PureBlast™ Mini.

Dry ice cleaning for tooling!

Cleaning molds, screws, mixers etc. with dry ice in the plastic injection molding industries can provide great benefits:

- Reduction in labor costs
- Reduced wear on tooling
- Decreased scrap rates



How Does Dry Ice Blasting Clean?

On site cleaning without having to remove the molds from the plastic injection molding machine. Cleaning when hot is an advantage to the cleaning with dry ice. Quick return of equipment back into production. No need to cool down and reheat. What normally could take hours can be done in minutes. Removal of grease and residues from the production process without any damage to the mold or equipment.



PureBlast™ Mini Specifications

Air requirements

One of the most important benefits of the PureBlast™ Mini (besides its low price) is that it is designed to function using typical plant air supply. Most factories have compressors that generate 100 psi and an air volume of up to 110 cfm. The Mini operates in a range from 30 to 175 psi and air volume from 18 to 106 cfm making it the ideal choice for many in house cleaning jobs.

Nozzles and blast hose

The standard 3 and 5 mm flat aluminum nozzles are machined for low air flow and together with the lightweight 10 foot ½ inch blast hose, the operator has an easy to handle set-up. To achieve the optimum cleaning performance for air consumption under 35 cfm/min, the flat 3 mm nozzle should be used and the dry ice pellet size should be 2.2 mm or smaller. If using the 3 mm industry standard dry ice pellets then the 5 mm flat nozzle should be used.

Control

Dry ice consumption can be regulated from 22 to 65 lbs/hour and the blast pressure can be adjusted between 30 to 175 psi.

Easy to transport, maneuver and store

Weighing only 64 lbs. and dimensions of 22"D x 19"W x 35"H (Height in shipping position is only 24") the machine can easily be lifted into a car or stored on a shelf. Equipped with wheels and holder for the blast hose, rolling it to the point of use is an effortless task.

Technical data:

- Height (with handle in lowest position): 24 inch
- Height (with handle in highest position): 35 inch
- Width: 19 inch
- Depth: 22 inch
- Weight: 64 lbs.
- Dry ice hopper capacity: 18 lbs
- Dry ice consumption: 22 to 66 lbs./hour
- Air requirements: 30-175 psi
- Dry ice size (3 mm flat nozzle): 2.2 mm or smaller
- Dry ice size (5 mm flat nozzle): 3.0 mm or smaller

PureBlast™ 3000

The PureBlast™ 3000 was developed in close cooperation with our customers who had specific needs for operating dry ice blasters in environments with many challenges.

With an overall width of only 16 inches the machine can easily be moved in and around narrow spaces and especially in between production machines. This enables the operator to get closer to the point of cleaning and thereby being able to work with shorter length of blast hoses, which gives a better cleaning result.

Hopper capacity

Being narrower does not mean a smaller dry ice hopper. The Pure-Blast™ 3000 holds more than 55 lbs. of dry ice, which for most applications is more than 30 minutes of operation before refilling.

Simplicity and robustness

Operating and moving equipment around in tight spaces also means the risk of damage to the machine. That is why we have designed the operation of the equipment with components located at the back of the machine and protected by the robust stainless steel handles.

Well known advantages

The PureBlast™ 3000 of course has all the features required. Large flat free tires, true 1 inch air flow through all parts, all FESTO components and 23 foot hose of your choice (lightweight PU or technical rubber).

Dimensions

- Width: 16 inch
- Height: 44 inch
- Length: 31 inch
- Weight: 176 lbs.



PureBlast™ Mini

Compact and affordable machine for low air flow compressors



PB-1000 Includes:

- PureBlast™ Unit
- MiniBlast gun
- 3 mm nozzle
- 5 mm nozzle
- 10ft. 1/2" blast hose

CATALOG NO.	DESCRIPTION
PB-1000	PUREBLAST MINI BLASTER
PB-1000G	MINI BLAST GUN
PB-5010H	1/2" BLAST HOSE FOR MINI
PB-5016H	1/2" BLAST HOSE FOR MINI
PB-1003	3MM NOZZLE
PB-1004	4MM NOZZLE
PB-1005	5MM NOZZLE
PB-100345	3MM 45 DEGREE NOZZLE
PB-100445	4MM 45 DEGREE NOZZLE
PB-100545	5MM 45 DEGREE NOZZLE
PB-1024	MINI LONG EXTENSION WAND
PB-1000PC	MINI DRY ICE PELLET CRUSHER
PB-1000R	HOLDER FOR NOZZLES AND GUN
PB-1000RP	MINI ROTARPLATE

PureBlast™ 3000

Environmentally Friendly - Dry Ice “BLAST” Surface Cleaning



PB-3000 Includes:

- PureBlast™ Unit
- PB3000 gun
- Technical rubber blast hose - 23ft
- Short aluminum nozzle
- 6 mm, 8 mm, 10 mm nozzle inserts

CATALOG NO.	DESCRIPTION
PB-3000	PUREBLAST 3000
PB-3000G	PB-3000 GUN
PB-3023H	TECHNICAL RUBBER BLAST HOSE
PB-3033H	TECHNICAL RUBBER BLAST HOSE
PB-3000L	PB-3000 LONG ALUMINUM NOZZLE
PB-3000S	PB-3000 SHORT ALUMINUM NOZZLE
PB-3045L	PB-3000 LONG ALUMINUM NOZZLE
PB-3005	PB-3000 NOZZLE INSERT - 5MM
PB-3006	PB-3000 NOZZLE INSERT - 6MM
PB-3007	PB-3000 NOZZLE INSERT - 7MM
PB-3008	PB-3000 NOZZLE INSERT -8MM
PB-3009	PB-3000 NOZZLE INSERT -9MM
PB-3010	PB-3000 NOZZLE INSERT -10MM
PB-3000W	PB-3000 WIDE ALUMINUM NOZZLE
PB-3000R	PB-3000 ROUND NOZZLE
PB-3000PC	PB-3000 PELLET CRUSHER
PB-3000R	PB-3000 NOZZLE HOLDER
PB-3000HR	PB-3000 HOSE HOLDER
PB-3000RP	PB-3000 ROTARPLATE



Turn To The Industry Experts