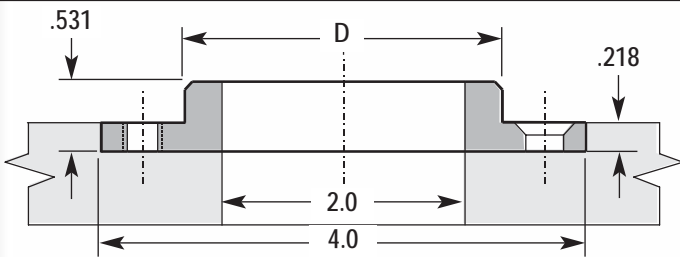
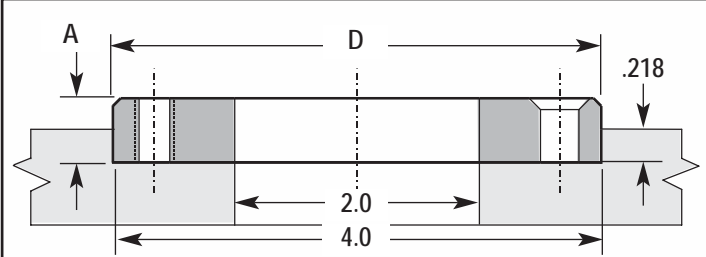


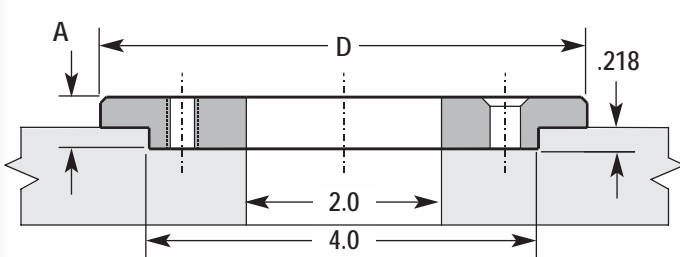
Locating Rings



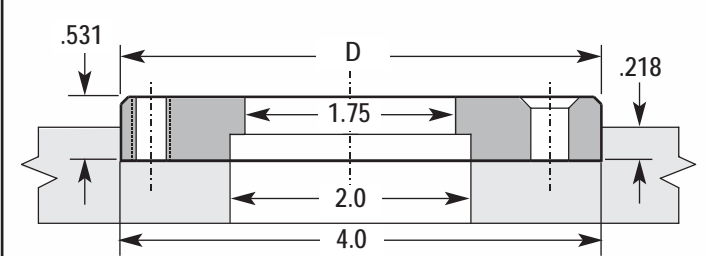
4500
4511



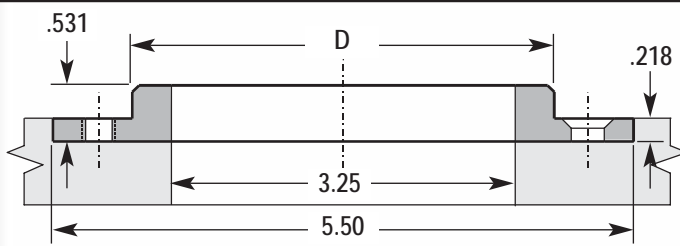
CATALOG NUMBER	A
4501	.531
4501LN	.437
4503	.218



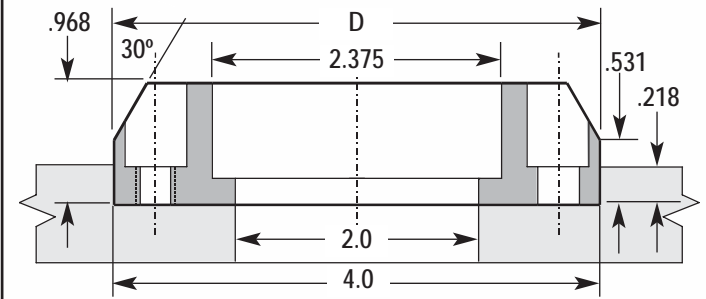
CATALOG NUMBER	A
4502	.531
4505LN	.437



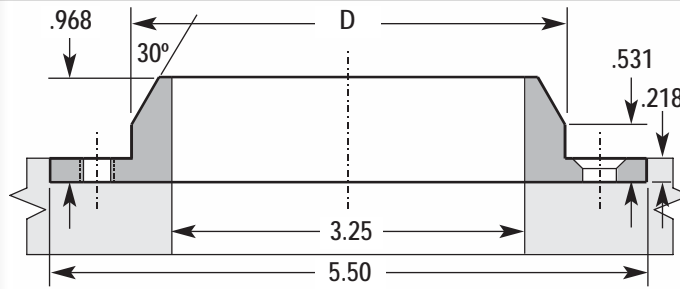
4504
Clamp Type



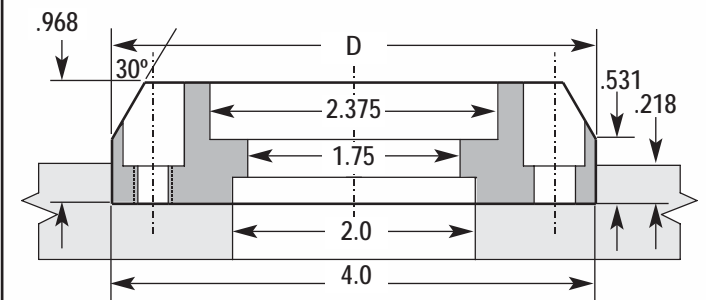
4520
Extension Nozzle Type



4521
Standard Series - Extra Lead In



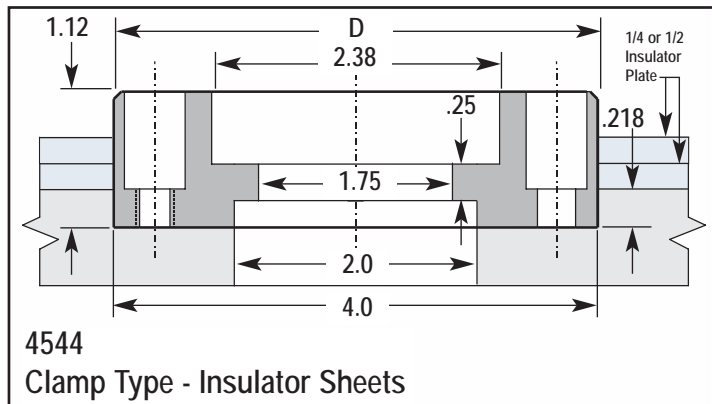
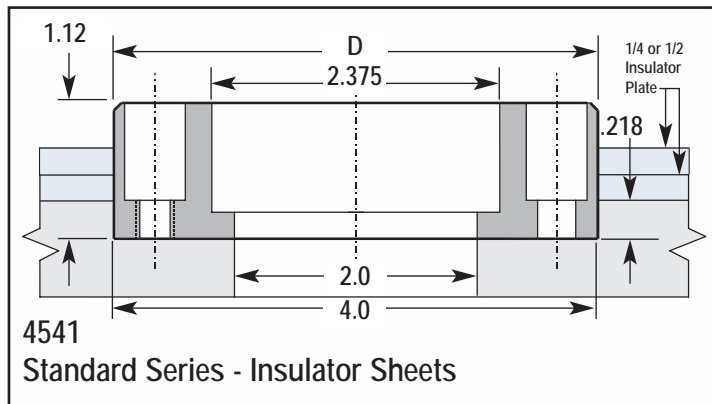
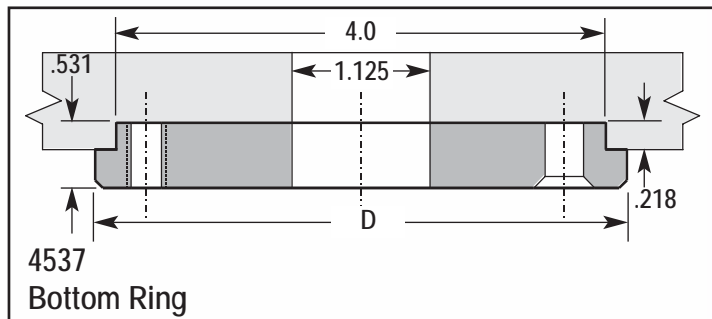
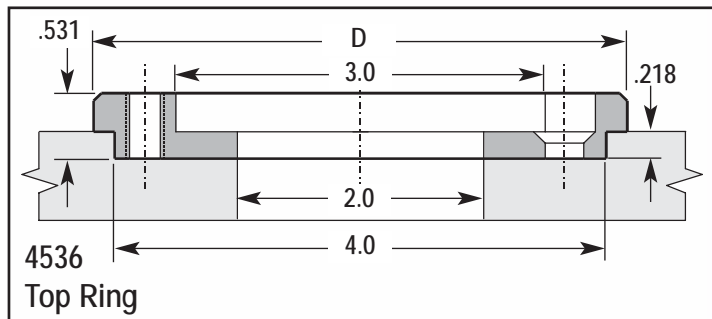
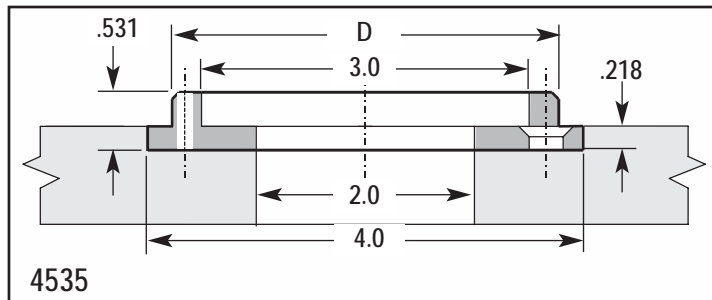
4522
Extension Nozzle Type - Extra Lead In



4524
Clamp Type - Extra Lead In

• Special available upon request

Locating Rings



All rings have 3.312 B.C. Except:
 4520, 4522 = 4.625 B.C.
 4536, 4537 = 3.312 B.C. Screw hole 3.500 B.C. Tapped Hole

CATALOG NUMBER	D	DESCRIPTION
4500	2.651	
4501	3.990	Standard Series
4501 LN	3.990	LN Series
4502	4.990	
4503	3.990	
4504	3.990	Clamp Type
4505 LN	5.990	LN Series
4511	2.990	
4520	3.990	Extension Nozzle Type
4521	3.990	Standard Series - Extra Lead In
4522	3.990	Extension Nozzle Type - Extra Lead In
4524	3.990	Clamp Type - Extra Lead In
4535	3.541	
4536	4.331	Top Ring
4537	4.331	Bottom Ring

Locating Rings for use with Insulator Sheets

CATALOG NUMBER	D	DESCRIPTION
4541	3.990	Standard Series - Insulator Sheets
4544	3.990	Clamp Type - Insulator Sheets

