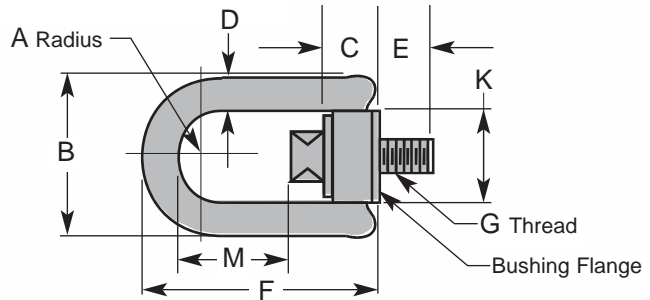


Safety Hoist Rings

Heavy Duty



- Range of movement Pivot 180° Swivel 360°
- Minimum safety factor = 5:1
- Meets military specification number MIL-STD 1365(11) or MIL-STD 209C
- 100% magnetic particle inspected
- Meets OSHA requirements



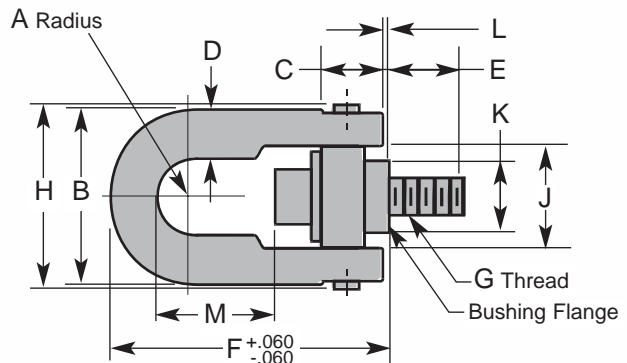
Patent Number 4,570,987 & 4,641,986

CATALOG NUMBER	RATED LOAD	A	B	C	D	E	F	G	K	TL * ft/lb	M	WT lbs
33212	800	.65	2.29	.96	.44	.56	3.23	5/16-18	1.25	7	1.51	.52
33312	1,000	.65	2.29	.96	.44	.56	3.23	3/8-16	1.25	12	1.45	.56
33515	2,500	1.00	3.50	1.50	.75	1.00	5.31	1/2-13	1.89	28	2.56	1.72
33614	4,000	1.00	3.50	1.50	.75	1.00	5.31	5/8-11	1.89	60	2.44	1.78
33714	5,000	1.00	3.50	1.50	.75	1.00	5.31	3/4-10	1.89	100	2.31	1.89
33101	8,000	1.40	5.10	2.05	1.00	1.20	7.00	7/8-9	2.81	160	3.07	7.33
33105	10,000	1.40	5.10	2.05	1.00	1.45	7.00	1-8	2.81	230	2.95	7.57
33401	15,000	2.00	6.75	2.87	1.25	2.63	9.22	1 1/4-7	3.88	470	3.74	16.00
33420	20,000	2.00	6.75	2.87	1.25	2.63	9.22	1 3/8-6	3.88	670	3.62	17.20
33424	24,000	2.00	6.75	2.87	1.25	2.63	9.22	1 1/2-6	3.88	800	3.49	18.10

* Recommended Torque Load

Metric hoist rings available

Safety Engineered Hoist Rings



Patent # 3,297,293

CATALOG NUMBER	RATED LOAD	A	B	C	D	E	F	G	H	J	K	L	M	TL * ft/lb	WT lbs
23200	30,000	2.25	8.00	2.81	1-3/4	2.96	12.47	2-4 1/2	8.55	4.87	4.20	.47	5.41	800	36 lbs
23503	50,000	3.00	10.50	4.09	2-1/4	4.00	16.87	2 1/2-4	11.67	6.52	5.75	1.12	8.03	2100	87 lbs 8 oz
23600	75,000	3.75	13.00	5.27	2-3/4	5.20	19.50	3-4	14.15	8.10	7.25	1.00	8.48	4300	166 lbs
23701	100,000	4.00	14.50	6.06	3-1/4	7.00	22.09	3 1/2-4	15.90	8.60	7.25	1.09	9.28	6600	240 lbs

* Recommended Torque Load

Metric hoist rings available

INSTALLATION and SAFETY INSTRUCTIONS

Tap workpiece with axis vertical to mounting surface. Work surface should be flat & smooth to provide full 360° flush seating for the bushing flange. SAFETY NOTE: Loosening may occur after prolonged service in a permanent installation. It is advisable to periodically re-tighten the mounting screw to maintain the specified torque value. The use of free fit spacers between the bushing flange & mounting surface is not recommended as this will reduce the safe load rating on angularly applied loads. Hoist ring must be free to swivel 360° & pivot 180° at all times.

