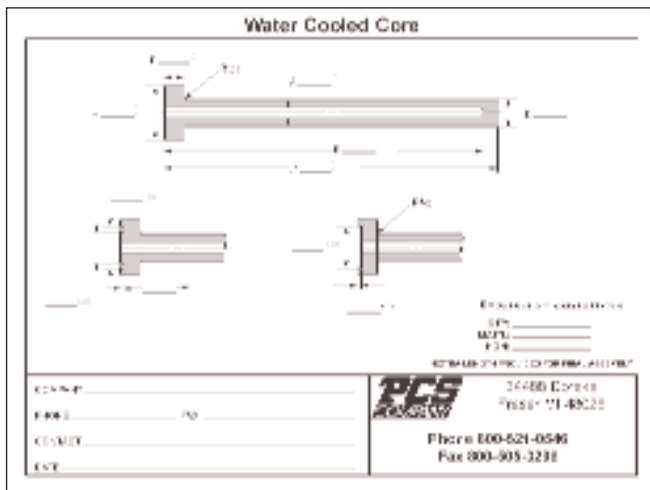
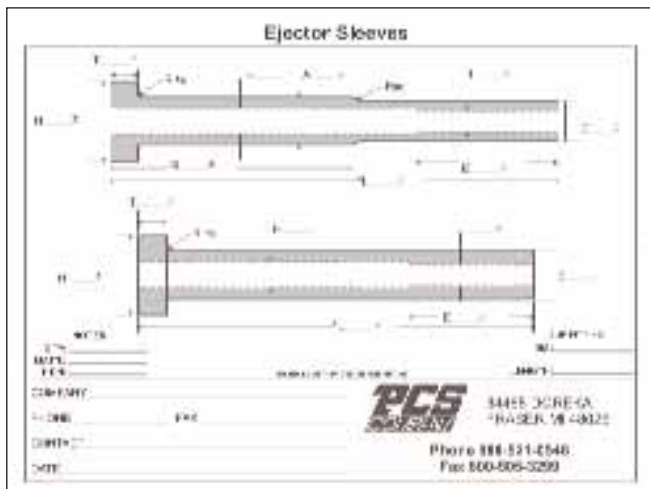


Water Cooled Cores, Cores



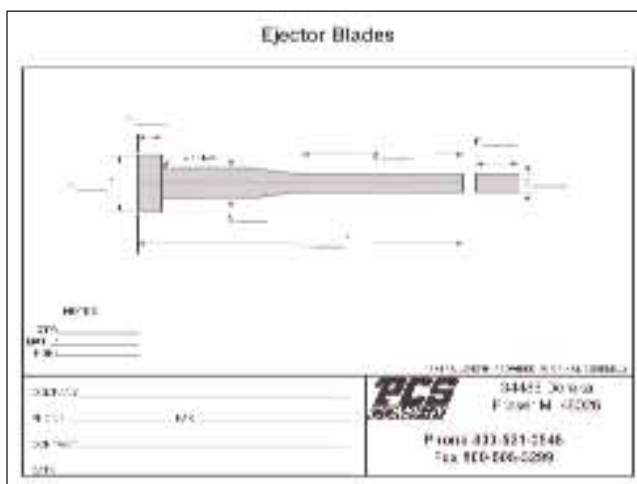
Advantages of PCS quality Special Water Cooled Cores

- PCS water cooled cores are precision ground to the size and tolerance required.
- Threaded holes and O-ring grooves can be machined to your specifications.
- PCS water cooled cores can be manufactured from our standard "Hardened Throughout™ Pins" as well as other materials (Stainless Steel, S-7, moldMax®, etc.).



Advantages of PCS quality Special Ejector Sleeves

- PCS sleeves are precision ground to any size & tolerance with as little as .030" wall thickness and can be supplied with PCS pins for a matched slip fit set.
- Any steel specified (A-10, S-7, H-13, A-2 etc.) will be heat treated to a high hardness I.D. and O.D. eliminating the galling found in 30-38 Rc I.D. sleeves.
- The I.D. is precision honed or lapped to size, then the O.D. is ground concentric to the I.D.

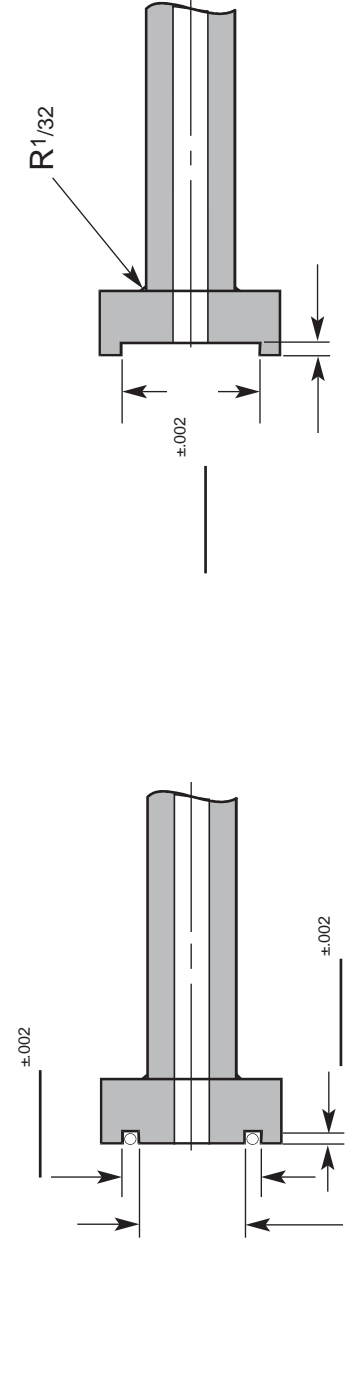
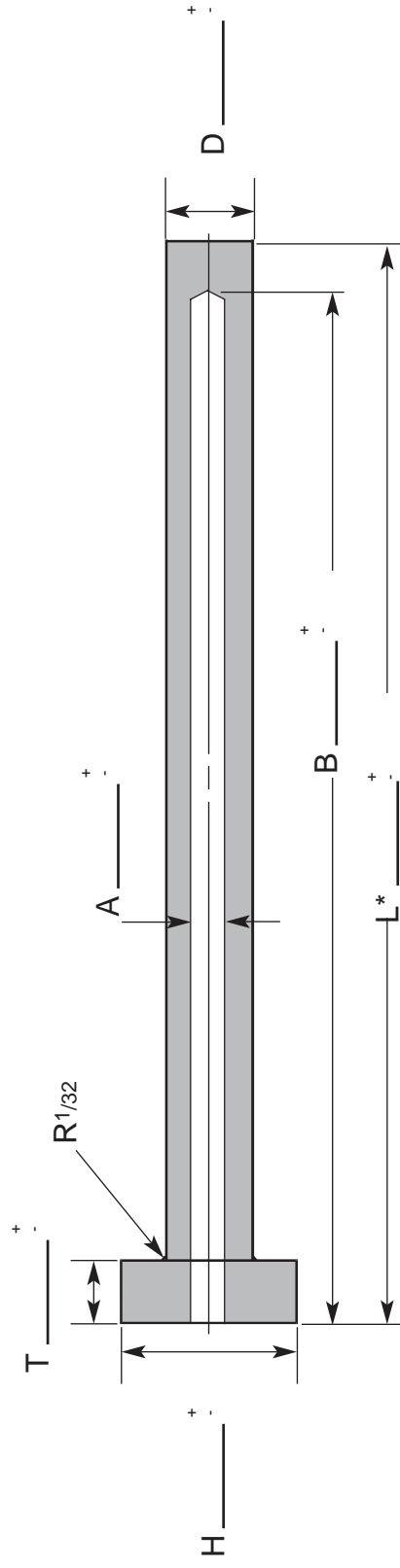


Advantages of PCS quality Special Ejector Blades

- PCS blades are of one piece construction alleviating problems associated with other type blades.
- PCS blades are precision ground, concentric with the main body, to any tolerance requirement.
- PCS blades can be manufactured from our standard "Hardened Throughout™ Pins" as well as other materials (M-2, S-7, A-2 & A-10).



Water Cooled Core



B= Depth to drill point including head thickness.

QTY: _____
 MAT'L: _____
 HDN: _____

*EXTRA LENGTH PROVIDED FOR FINAL ASSEMBLY

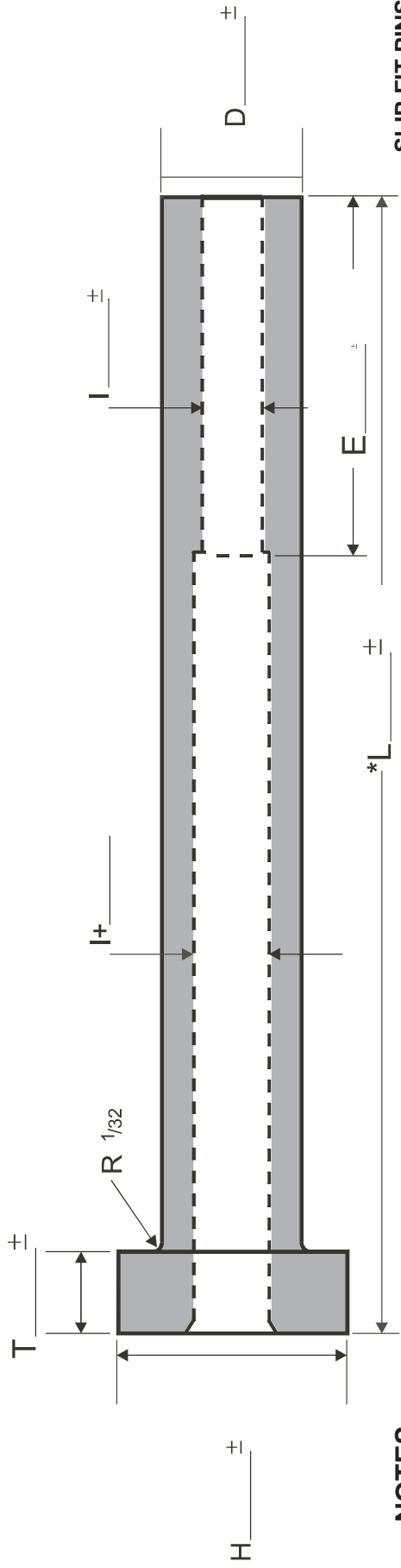
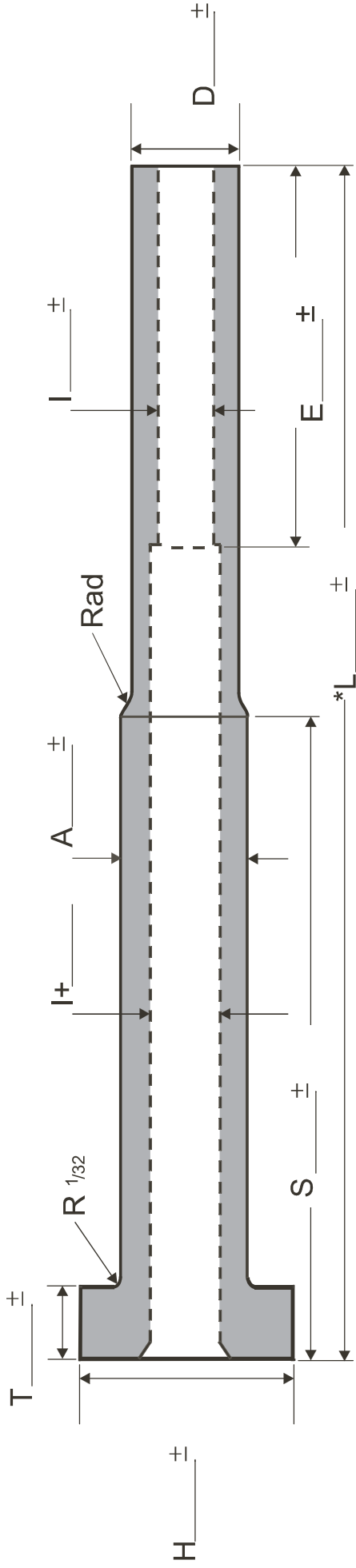


34488 Doreka
 Fraser MI 48026

Phone 800-521-0546
 Fax 800-505-3299

COMPANY _____
 PHONE _____ FAX _____
 CONTACT _____
 DATE _____

Ejector Sleeves



NOTES

QTY: _____
 MAT'L: _____
 HDN: _____

SLIP FIT PINS
 DIA: _____

LENGTH: _____

*EXTRA LENGTH PROVIDED FOR FITTING

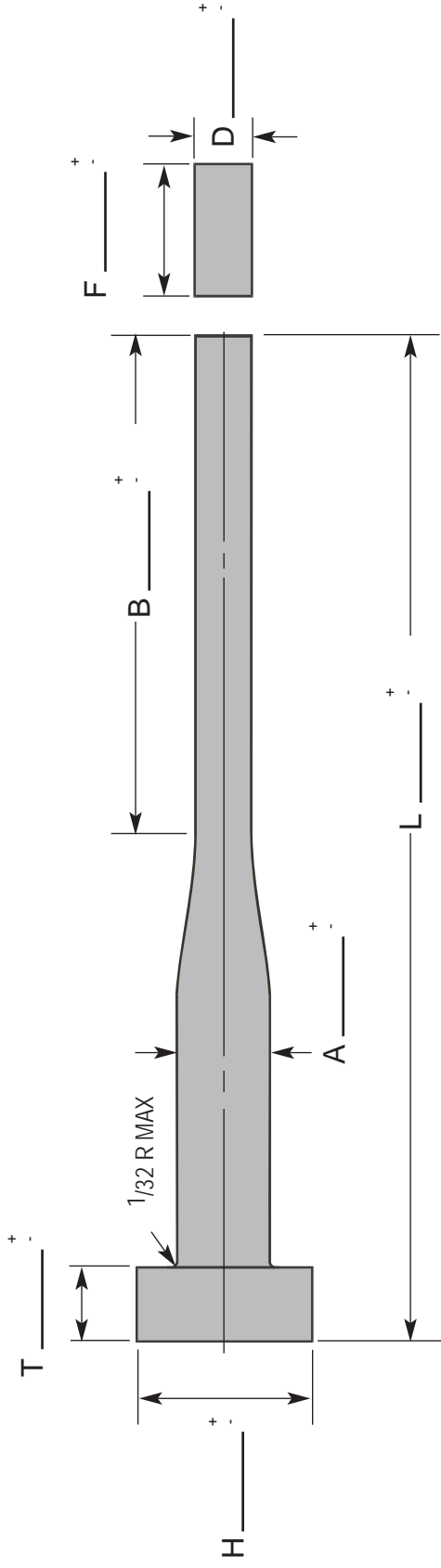


34488 DOREKA
 FRASER MI 48026

Phone 800-521-0546
 Fax 800-505-3299

COMPANY _____
 PHONE _____ FAX _____
 CONTACT _____
 DATE _____

Ejector Blades



NOTES

QTY: _____
 MAT'L: _____
 HDN: _____

*EXTRA LENGTH PROVIDED FOR FINAL ASSEMBLY



34488 Doreka
 Fraser MI 48026

Phone 800-521-0546
 Fax 800-505-3299

COMPANY _____

PHONE _____ FAX _____

CONTACT _____

DATE _____