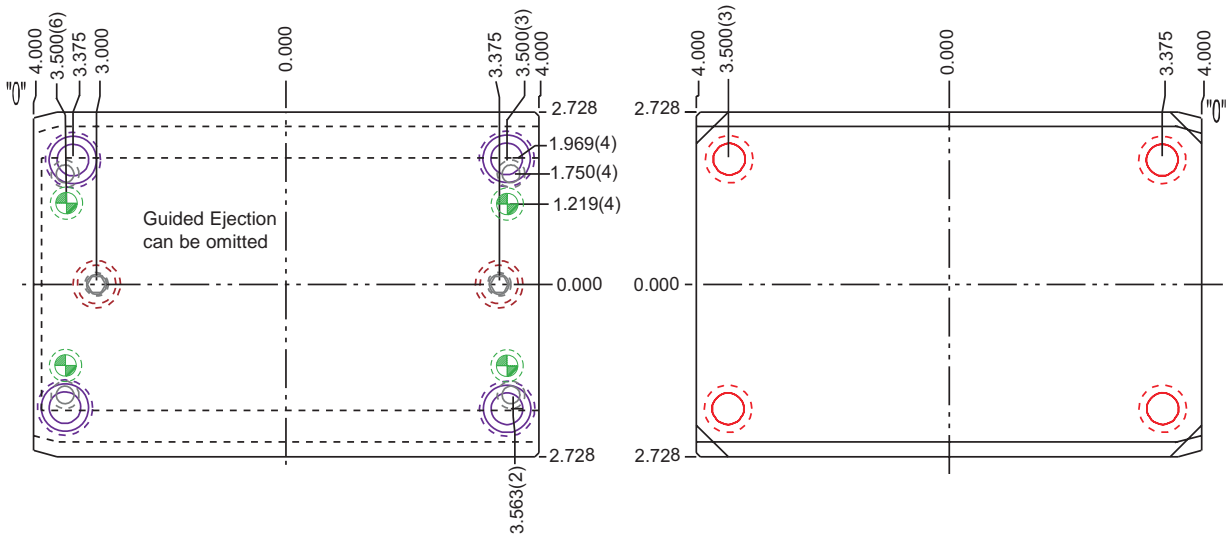


08/09 Series

5 x 8 Solid PLUS

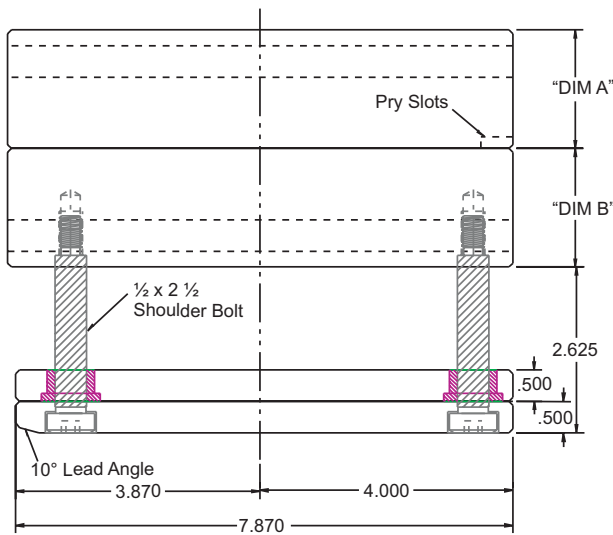
STANDARD FEATURES

- A & B Plates #3 Steel / All others #2 Steel
- Guided Ejection included at no extra charge
- Return Pins & Additional Leader Pins available

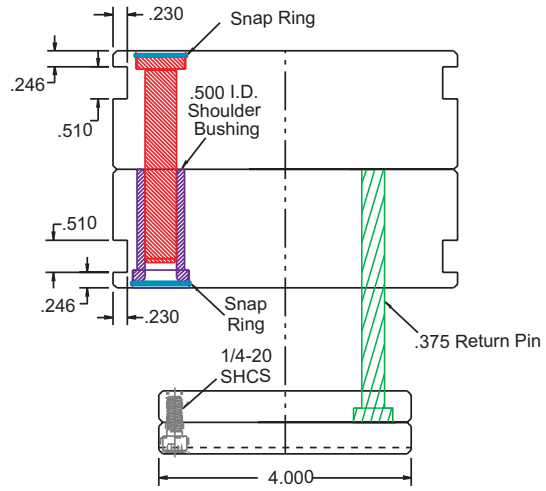


Core Plan View

Cavity Plan View



Section View



End View

| COMPLETE ASSEMBLY | | |
|-------------------|-------|-------|
| CATALOG NUMBER | A | B |
| FTS-0809-221-X | 1.376 | 1.376 |
| FTS-0809-222-X | 1.376 | 1.876 |
| FTS-0809-223-X | 1.876 | 1.376 |
| FTS-0809-224-X | 1.876 | 1.876 |

Features:

- Clamp Slots rather than Ears in Solid Units for greater Clamping Stability and Larger Cavities and Cores
- Compatible with M.U.D.™ Style U Frames
- A & B Plates #3 Steel / All Others #2 Steel

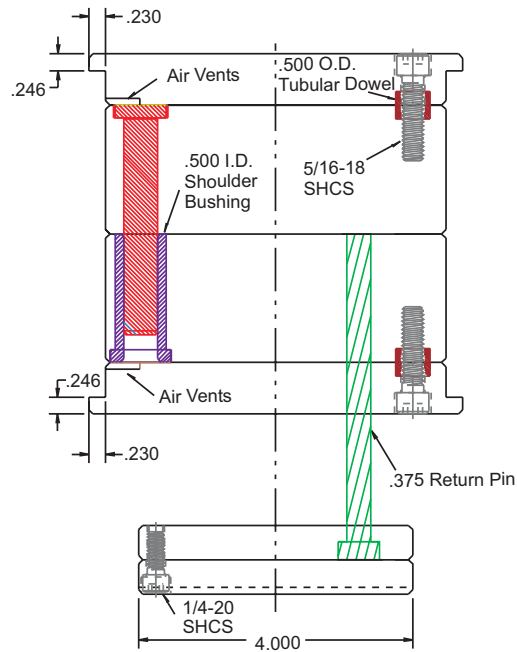
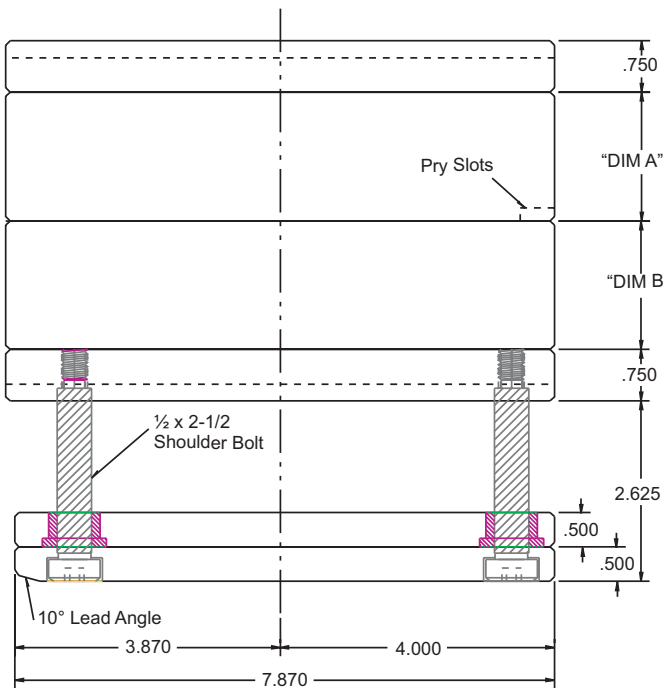
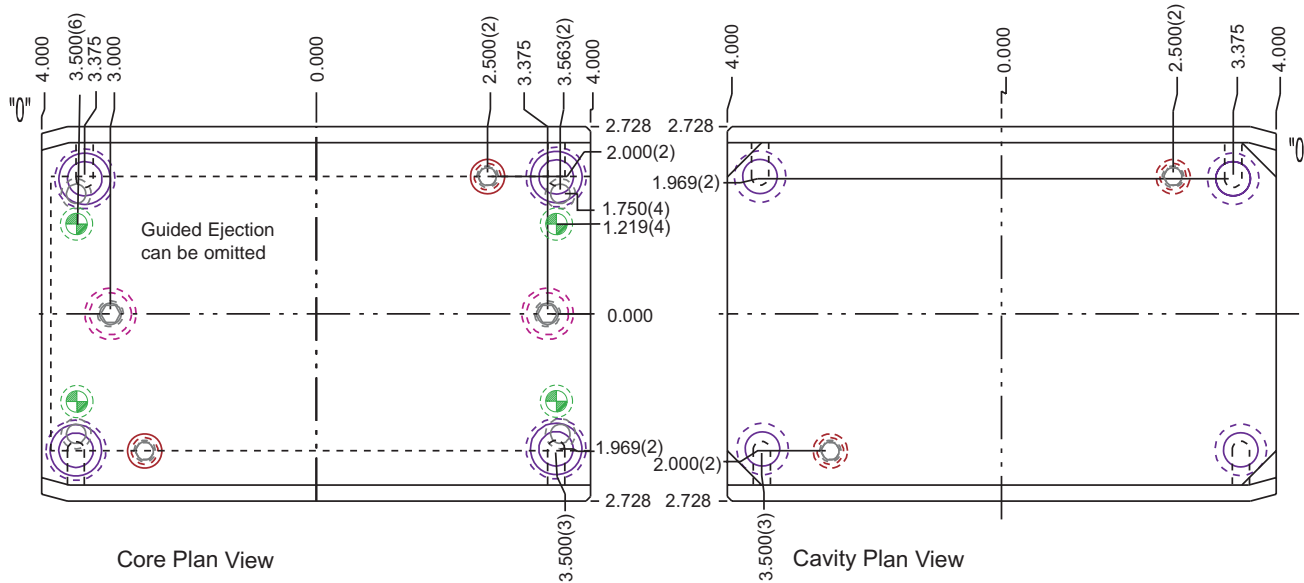
For Sleeve Ejector Plate Sets see page B15



STANDARD FEATURES

- A & B Plates #3 Steel / All others #2 Steel
- Guided Ejection included at no extra charge
- Return Pins & Additional Leader Pins available

08/09 Series 5 x 8 Laminated PLUS



Section View

End View

Features:

- Compatible with M.U.D.™ Style U Frames
- A & B Plates #3 Steel / All Others #2 Steel

| COMPLETE ASSEMBLY | | |
|-------------------|-------|-------|
| CATALOG NUMBER | A | B |
| FTL-0809-284-X | 1.126 | 1.126 |

For Sleeve Ejector Plate Sets see page B15

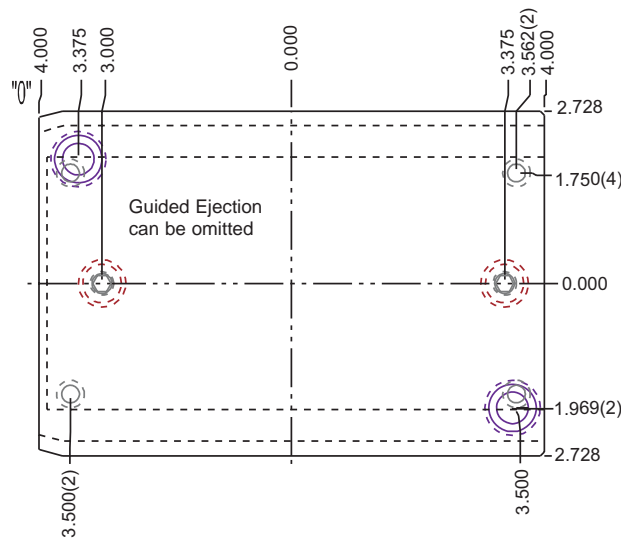
Home of the Hardened Throughout™ Pin



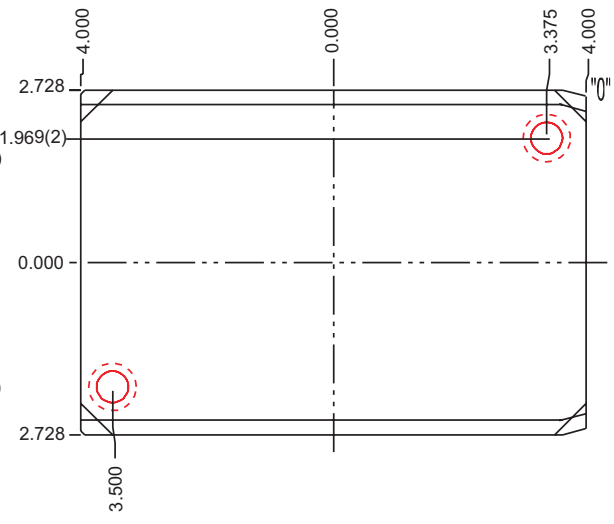
08/09 Series

5 x 8 Solid

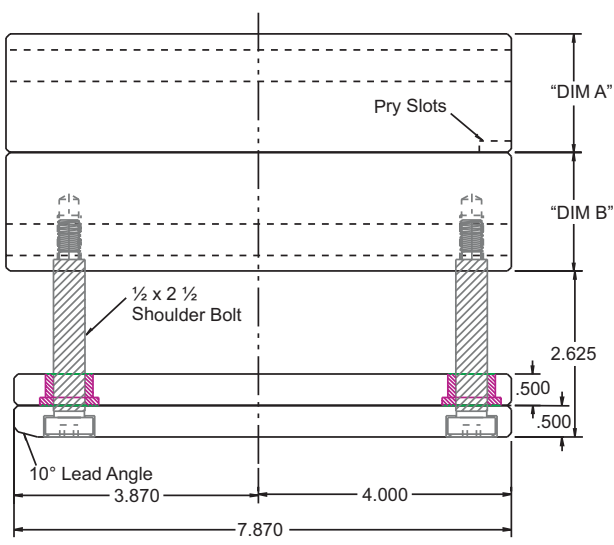
- STANDARD FEATURES**
- A & B Plates #3 Steel / All others #2 Steel
 - Guided Ejection included at no extra charge
 - Return Pins & Additional Leader Pins available



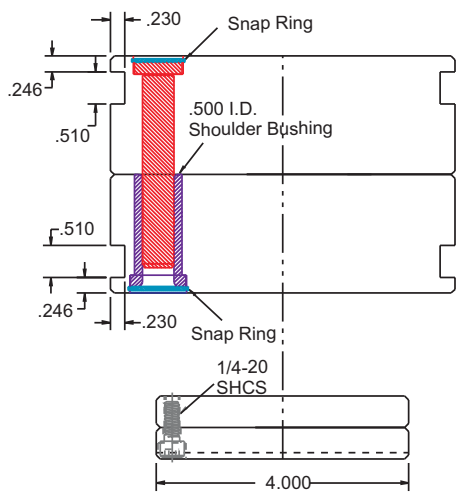
Core Plan View



Cavity Plan View



Section View



End View

| COMPLETE ASSEMBLY | | |
|-------------------|-------|-------|
| CATALOG NUMBER | A | B |
| FTS-0809-221 | 1.376 | 1.376 |
| FTS-0809-222 | 1.376 | 1.876 |
| FTS-0809-223 | 1.876 | 1.376 |
| FTS-0809-224 | 1.876 | 1.876 |
| FTS-0809-225 | 1.876 | 2.376 |
| FTS-0809-226 | 2.376 | 1.876 |
| FTS-0809-227 | 2.376 | 2.376 |

| REPLACEMENT PLATES | | |
|--------------------|-----------------|----------------|
| DESCRIPTION | PLATE THICKNESS | CATALOG NUMBER |
| A PLATE | 1-3/8 | 3AS-0809-13 |
| | 1-7/8 | 3AS-0809-17 |
| | 2-3/8 | 3AS-0809-23 |
| B PLATE | 1-3/8 | 3BS-0809-13 |
| | 1-7/8 | 3BS-0809-17 |
| | 2-3/8 | 3BS-0809-23 |
| RETAINER PLATE | 1/2 | 2ER-0809-04 |
| EJECTOR PLATE | 1/2 | 2EP-0809-04 |

* ADD "G" TO END OF EJECTOR RETAINER AND EJECTOR PLATES TO OMIT GUIDED EJECTION I.E. 2ER-0809-04G

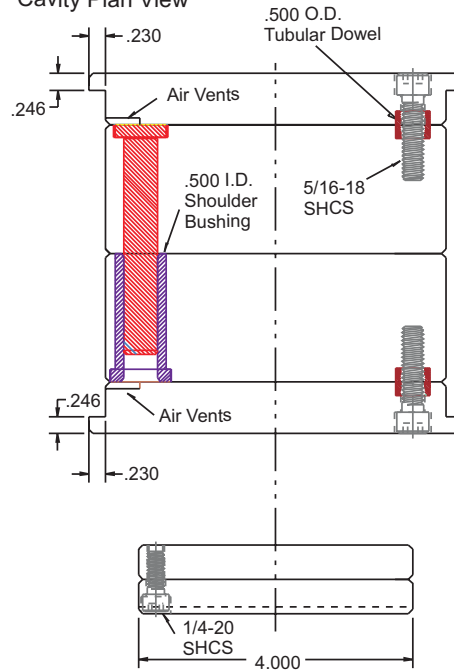
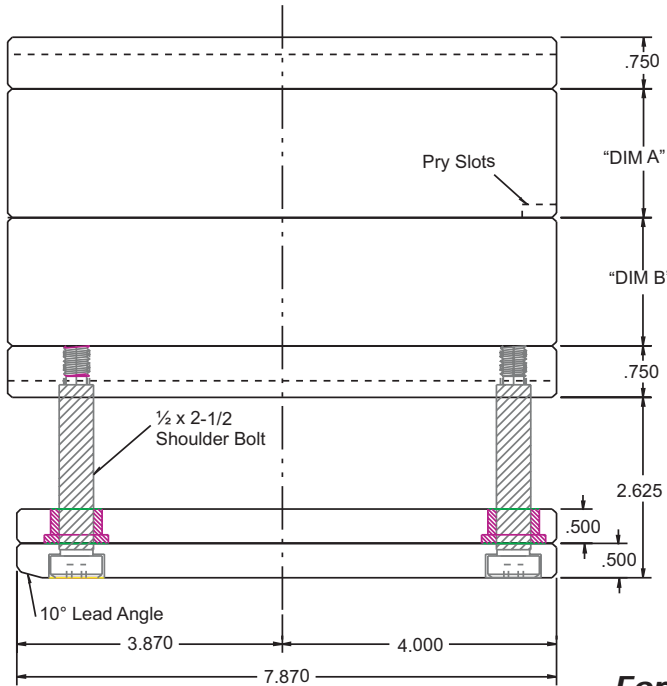
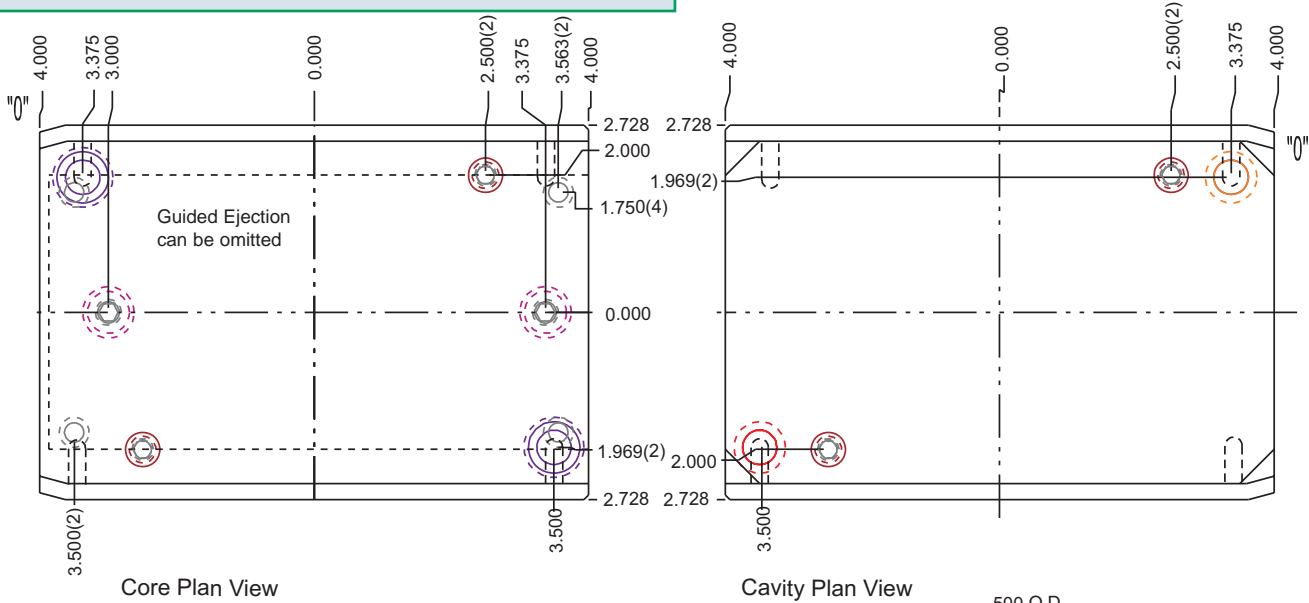
For Sleeve Ejector Plate Sets see page B15



STANDARD FEATURES

- A & B Plates #3 Steel / All others #2 Steel
- Guided Ejection included at no extra charge
- Return Pins & Additional Leader Pins available

08/09 Series
5 x 8 Laminated



For Sleeve Ejector Plate Sets see page B15

| REPLACEMENT PLATES | | |
|--------------------|-----------------|----------------|
| DESCRIPTION | PLATE THICKNESS | CATALOG NUMBER |
| A PLATE | 1-1/8 | 3AL-0809-11 |
| | 1-5/8 | 3AL-0809-15 |
| | 2-1/8 | 3AL-0809-21 |
| B PLATE | 1-1/8 | 3BL-0809-11 |
| | 1-5/8 | 3BL-0809-15 |
| | 2-1/8 | 3BL-0809-21 |
| SUPPORT PLATE | 3/4 | 2SP-0809-06 |
| RETAINER PLATE | 1/2 | 2ER-0809-04 |
| EJECTOR PLATE | 1/2 | 2EP-0809-04 |

| COMPLETE ASSEMBLY | | |
|-------------------|-------|-------|
| CATALOG NUMBER | A | B |
| FTL-0809-284 | 1.126 | 1.126 |
| FTL-0809-285 | 1.126 | 1.626 |
| FTL-0809-286 | 1.626 | 1.126 |
| FTL-0809-287 | 1.626 | 1.626 |
| FTL-0809-288 | 1.626 | 2.126 |
| FTL-0809-289 | 2.126 | 1.626 |
| FTL-0809-290 | 2.126 | 2.126 |

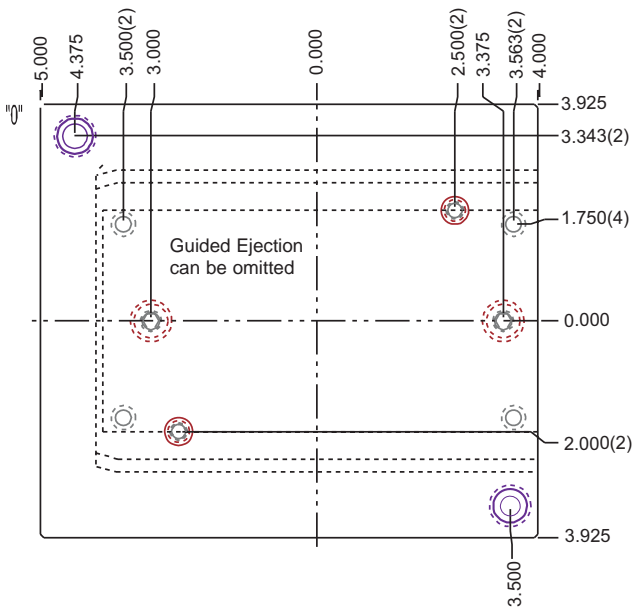
* ADD "G" TO END OF EJECTOR RETAINER AND EJECTOR PLATES TO OMIT GUIDED EJECTION I.E. 2ER-0809-04G

08/09 Series

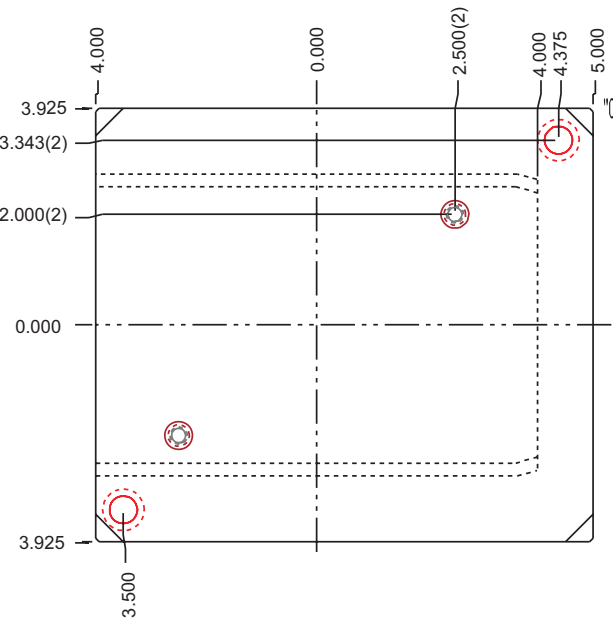
7.85 x 9 T-Style

STANDARD FEATURES

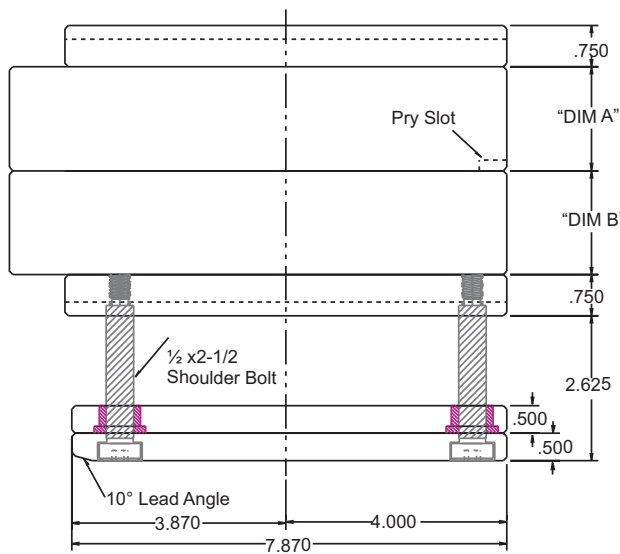
- A & B Plates #3 Steel / All others #2 Steel
- Guided Ejection included at no extra charge
- Return Pins & Additional Leader Pins available



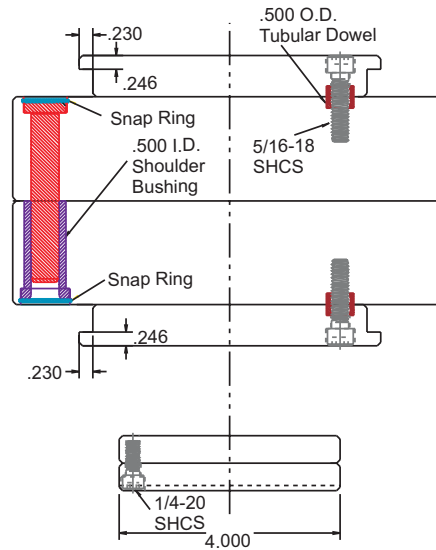
Core Plan View



Cavity Plan View



Section View



End View

| COMPLETE ASSEMBLY | | |
|-------------------|-------|-------|
| CATALOG NUMBER | A | B |
| FTT-0809-201 | 1.001 | 1.001 |
| FTT-0809-202 | 1.001 | 1.501 |
| FTT-0809-203 | 1.251 | 1.251 |
| FTT-0809-204 | 1.501 | 1.001 |
| FTT-0809-205 | 1.501 | 1.501 |
| FTT-0809-206 | 1.876 | 1.876 |

* ADD "G" TO END OF EJECTOR RETAINER AND EJECTOR PLATES TO OMIT GUIDED EJECTION P.E. 2ER-0809-04G

| REPLACEMENT PLATES | | |
|--------------------|-----------------|----------------|
| DESCRIPTION | PLATE THICKNESS | CATALOG NUMBER |
| A PLATE | 1 | 3AT-0809-10 |
| | 1-1/4 | 3AT-0809-12 |
| | 1-1/2 | 3AT-0809-14 |
| | 1-7/8 | 3AT-0809-17 |
| B PLATE | 1 | 3BT-0809-10 |
| | 1-1/4 | 3BT-0809-12 |
| | 1-1/2 | 3BT-0809-14 |
| | 1-7/8 | 3BT-0809-17 |
| SUPPORT PLATE | 3/4 | 2SP-0809-06 |
| RETAINER PLATE | 1/2 | 2ER-0809-04 |
| EJECTOR PLATE | 1/2 | 2EP-0809-04 |

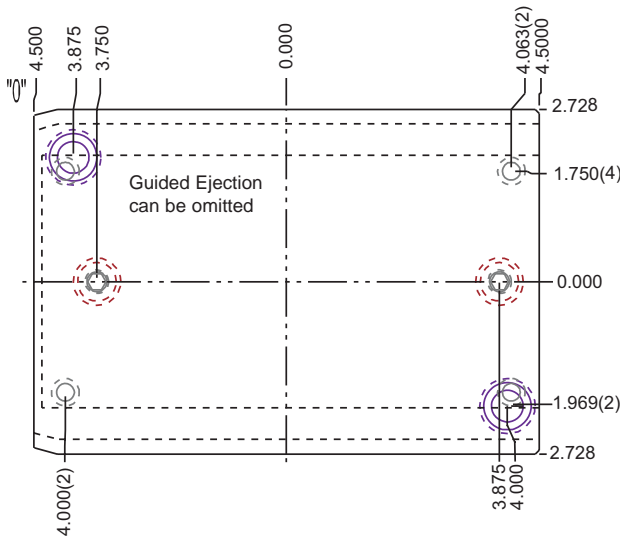


STANDARD FEATURES

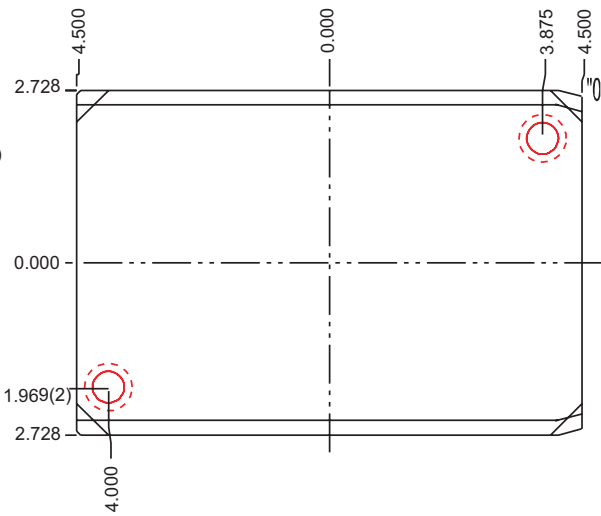
- A & B Plates #3 Steel / All others #2 Steel
- Guided Ejection included at no extra charge
- Return Pins & Additional Leader Pins available

08/10 Series

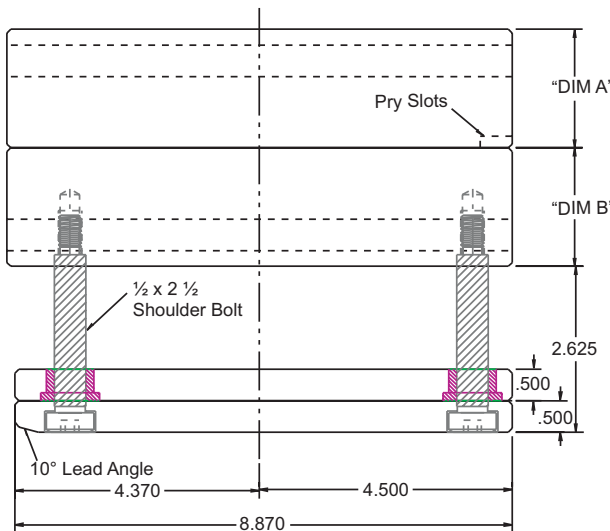
5 x 9 Solid



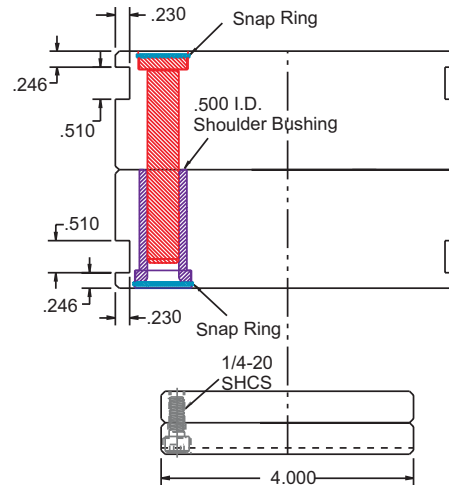
Core Plan View



Cavity Plan View



Section View



End View

| REPLACEMENT PLATES | | |
|--------------------|-----------------|----------------|
| DESCRIPTION | PLATE THICKNESS | CATALOG NUMBER |
| A PLATE | 1-3/8 | 3AS-0810-13 |
| | 1-7/8 | 3AS-0810-17 |
| | 2-3/8 | 3AS-0810-23 |
| B PLATE | 1-3/8 | 3BS-0810-13 |
| | 1-7/8 | 3BS-0810-17 |
| | 2-3/8 | 3BS-0810-23 |
| RETAINER PLATE | 1/2 | 2ER-0810-04 |
| EJECTOR PLATE | 1/2 | 2EP-0810-04 |

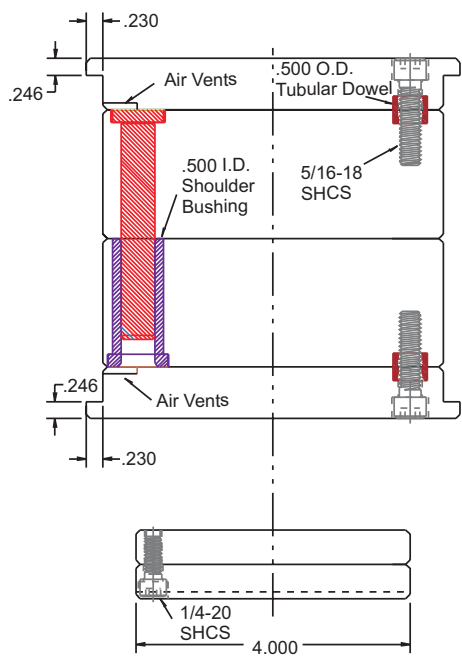
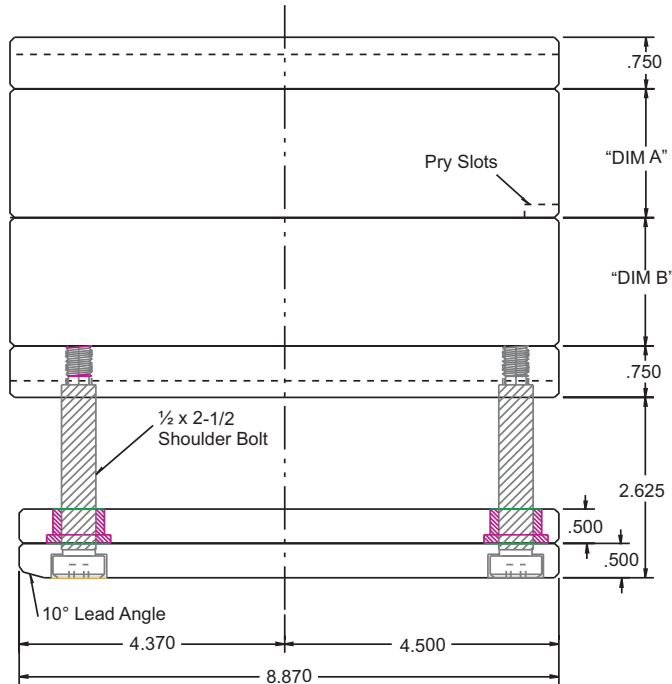
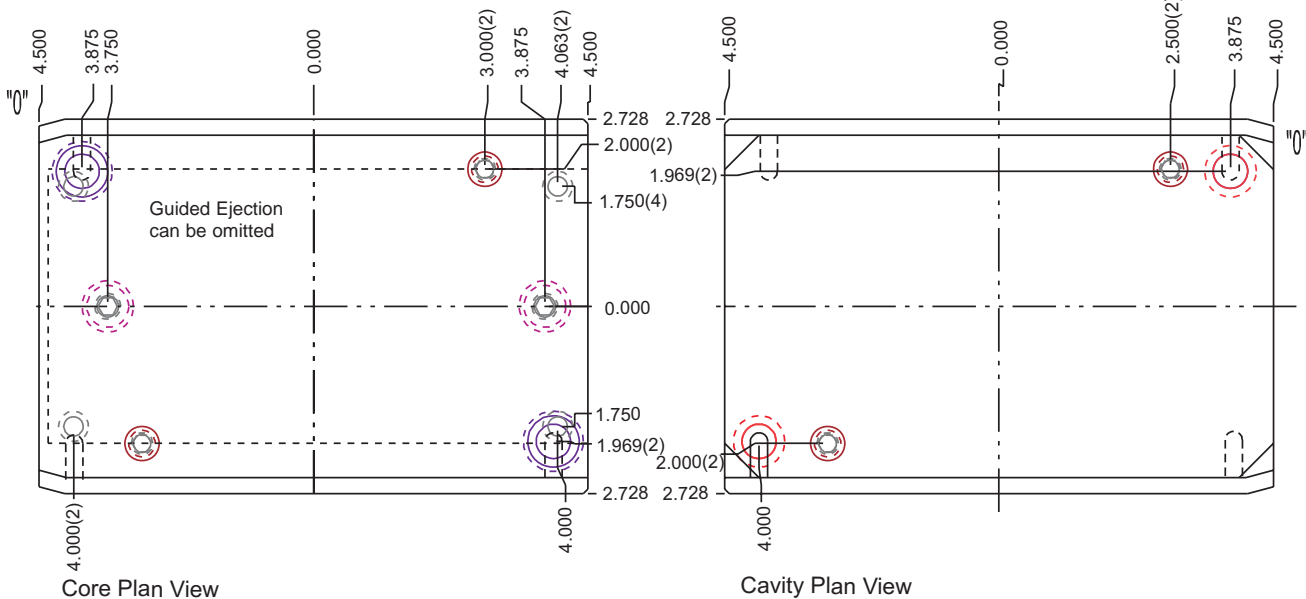
* ADD "G" TO END OF EJECTOR RETAINER AND EJECTOR PLATES TO OMIT GUIDED EJECTION I.E. 2ER-0810-04G

| COMPLETE ASSEMBLY | | |
|-------------------|-------|-------|
| CATALOG NUMBER | A | B |
| FTS-0810-221 | 1.376 | 1.376 |
| FTS-0810-222 | 1.376 | 1.876 |
| FTS-0810-223 | 1.876 | 1.376 |
| FTS-0810-224 | 1.876 | 1.876 |
| FTS-0810-225 | 1.876 | 2.376 |
| FTS-0810-226 | 2.376 | 1.876 |
| FTS-0810-227 | 2.376 | 2.376 |

08/10 Series

5 x 9 Laminated

- STANDARD FEATURES**
- A & B Plates #3 Steel / All others #2 Steel
 - Guided Ejection included at no extra charge
 - Return Pins & Additional Leader Pins available



| COMPLETE ASSEMBLY | | |
|-------------------|-------|-------|
| CATALOG NUMBER | A | B |
| FTL-0810-284 | 1.126 | 1.126 |
| FTL-0810-285 | 1.126 | 1.626 |
| FTL-0810-286 | 1.626 | 1.126 |
| FTL-0810-287 | 1.626 | 1.626 |
| FTL-0810-288 | 1.626 | 2.126 |
| FTL-0810-289 | 2.126 | 1.626 |
| FTL-0810-288 | 2.126 | 2.126 |

| REPLACEMENT PLATES | | |
|--------------------|-----------------|----------------|
| DESCRIPTION | PLATE THICKNESS | CATALOG NUMBER |
| A PLATE | 1-1/8 | 3AL-0810-11 |
| | 1-5/8 | 3AL-0810-15 |
| | 2-1/8 | 3AL-0810-21 |
| B PLATE | 1-1/8 | 3BL-0810-11 |
| | 1-5/8 | 3BL-0810-15 |
| | 2-1/8 | 3BL-0810-21 |
| SUPPORT PLATE | 3/4 | 2SP-0810-06 |
| RETAINER PLATE | 1/2 | 2ER-0810-04 |
| EJECTOR PLATE | 1/2 | 2EP-0810-04 |

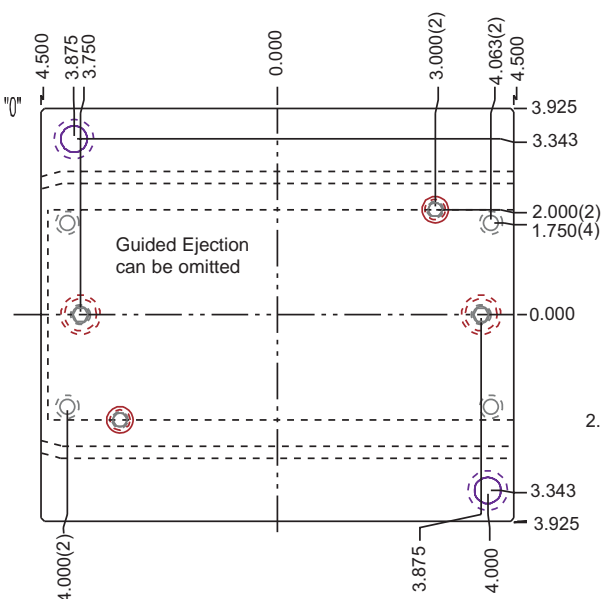
* ADD "G" TO END OF EJECTOR RETAINER AND EJECTOR PLATES TO OMIT GUIDED EJECTION I.E. 2ER-0810-04G



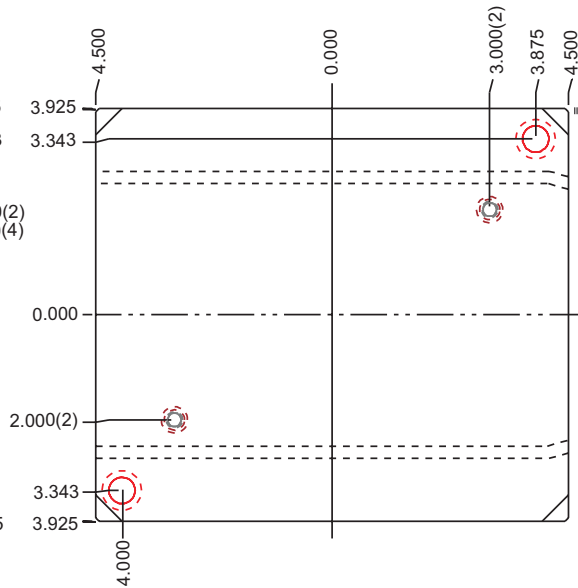
STANDARD FEATURES

- A & B Plates #3 Steel / All others #2 Steel
- Guided Ejection included at no extra charge
- Return Pins & Additional Leader Pins available

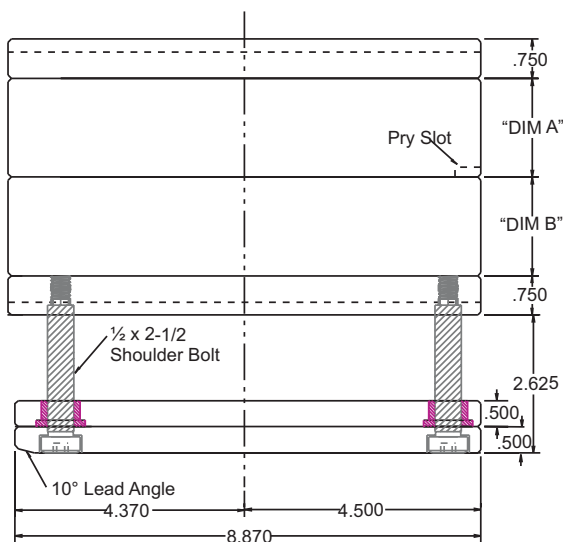
08/10 Series 7.85 x 9 T-Style



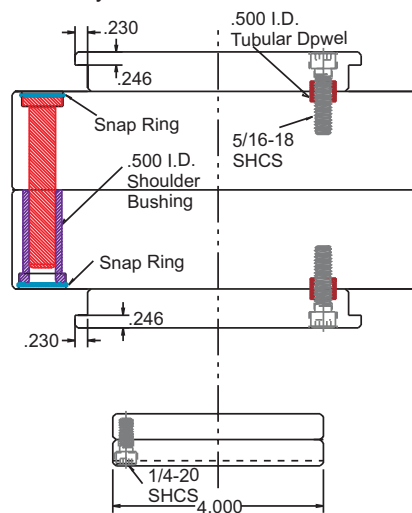
Core Plan View



Cavity Plan View



Section View



End View

| REPLACEMENT PLATES | | |
|--------------------|-----------------|----------------|
| DESCRIPTION | PLATE THICKNESS | CATALOG NUMBER |
| A PLATE | 1 | 3AT-0810-10 |
| | 1-1/4 | 3AT-0810-12 |
| | 1-1/2 | 3AT-0810-14 |
| | 1-7/8 | 3AT-0810-17 |
| B PLATE | 1 | 3BT-0810-10 |
| | 1-1/4 | 3BT-0810-12 |
| | 1-1/2 | 3BT-0810-14 |
| | 1-7/8 | 3BT-0810-17 |
| SUPPORT PLATE | 3/4 | 2SP-0810-06 |
| RETAINER PLATE | 1/2 | 2ER-0810-04 |
| EJECTOR PLATE | 1/2 | 2EP-0810-04 |

| COMPLETE ASSEMBLY | | |
|-------------------|-------|-------|
| CATALOG NUMBER | A | B |
| FTT-0810-201 | 1.001 | 1.001 |
| FTT-0810-202 | 1.001 | 1.501 |
| FTT-0810-203 | 1.251 | 1.251 |
| FTT-0810-204 | 1.501 | 1.001 |
| FTT-0810-205 | 1.501 | 1.501 |
| FTT-0810-206 | 1.876 | 1.876 |

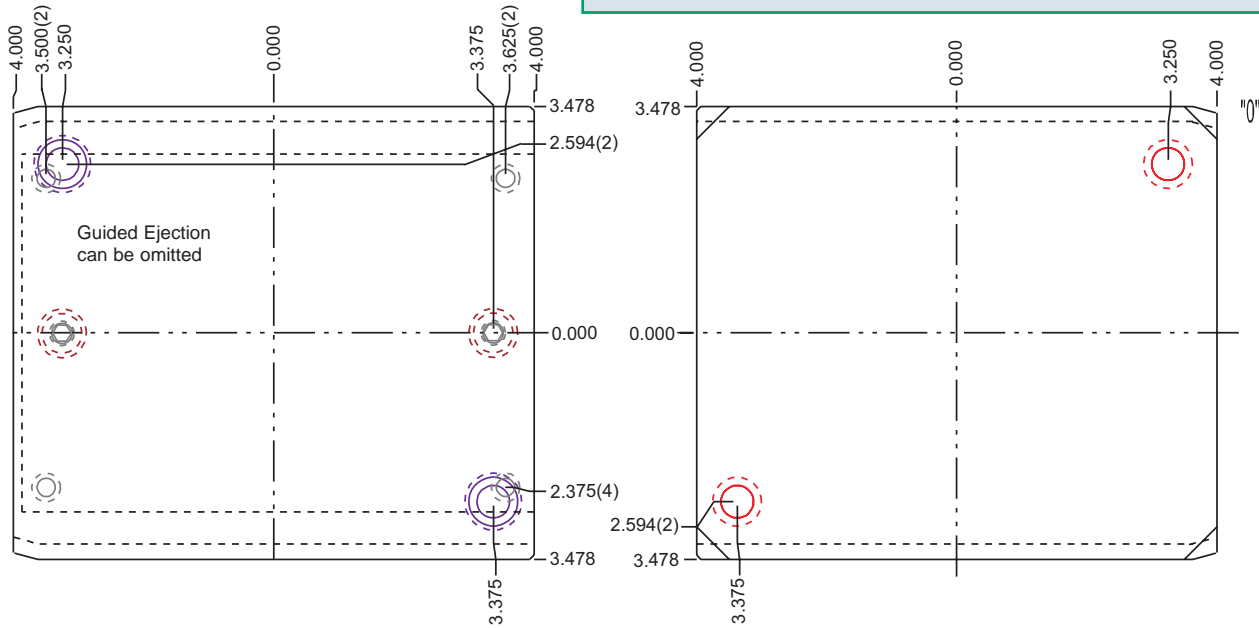
* ADD "G" TO END OF EJECTOR RETAINER AND EJECTOR PLATES TO OMIT GUIDED EJECTION I.E. 2ER-0810-04G

84/90 Series

6.5 x 8 Solid

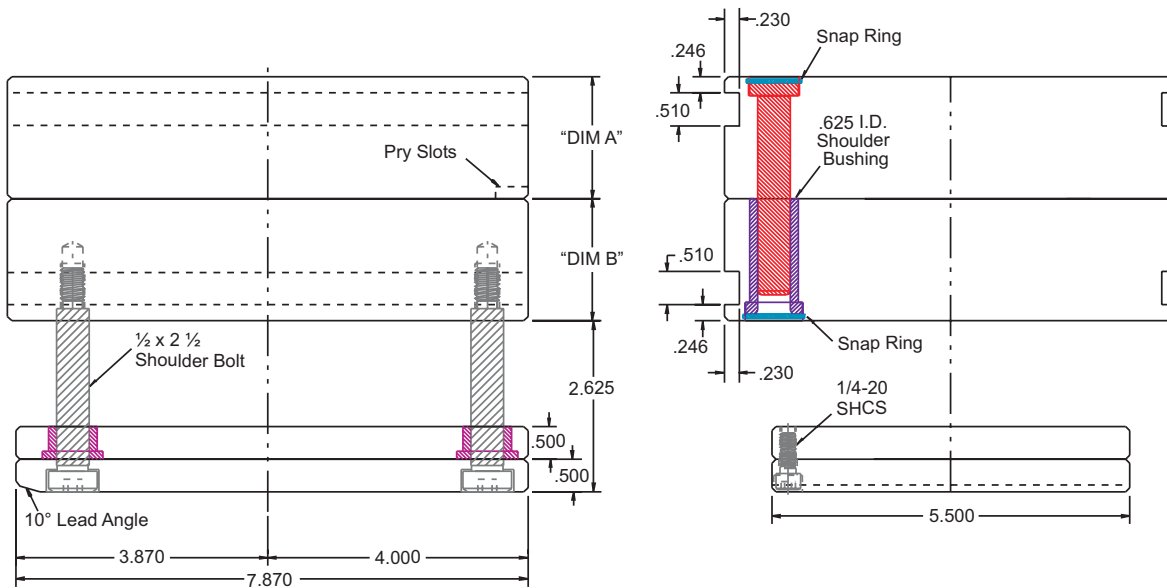
STANDARD FEATURES

- A & B Plates #3 Steel / All others #2 Steel
- Guided Ejection included at no extra charge
- Return Pins & Additional Leader Pins available



Core Plan View

Cavity Plan View



Section View

End View

| COMPLETE ASSEMBLY | | |
|-------------------|-------|-------|
| CATALOG NUMBER | A | B |
| FTS-8490-221 | 1.376 | 1.376 |
| FTS-8490-222 | 1.376 | 1.876 |
| FTS-8490-223 | 1.876 | 1.376 |
| FTS-8490-224 | 1.876 | 1.876 |
| FTS-8490-225 | 1.876 | 2.376 |
| FTS-8490-226 | 2.376 | 1.876 |
| FTS-8490-227 | 2.376 | 2.376 |

| REPLACEMENT PLATES | | |
|--------------------|-----------------|----------------|
| DESCRIPTION | PLATE THICKNESS | CATALOG NUMBER |
| A PLATE | 1-3/8 | 3AS-8490-13 |
| | 1-7/8 | 3AS-8490-17 |
| | 2-3/8 | 3AS-8490-23 |
| B PLATE | 1-3/8 | 3BS-8490-13 |
| | 1-7/8 | 3BS-8490-17 |
| | 2-3/8 | 3BS-8490-23 |
| RETAINER PLATE | 1/2 | 2ER-8490-04 |
| EJECTOR PLATE | 1/2 | 2EP-8490-04 |

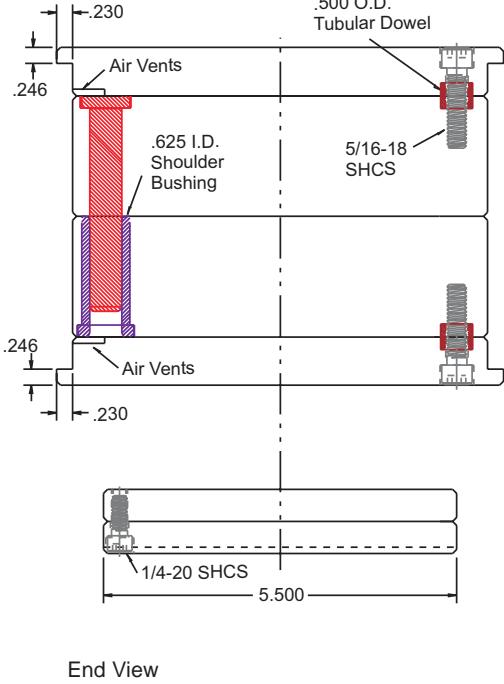
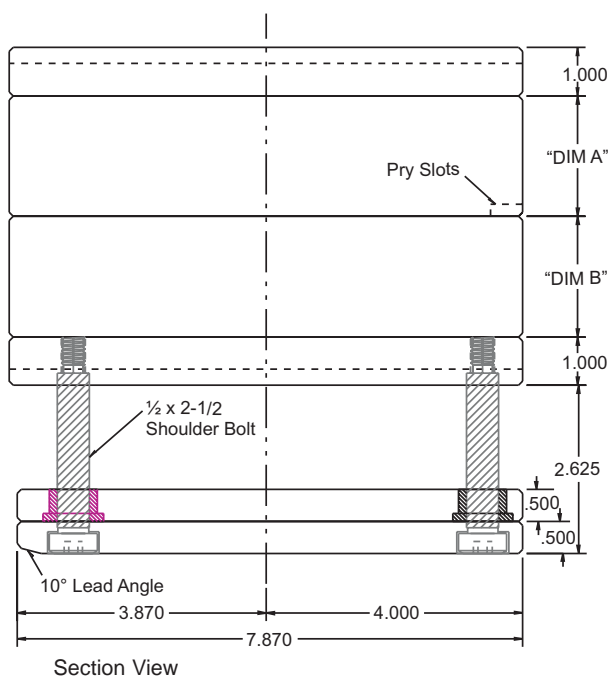
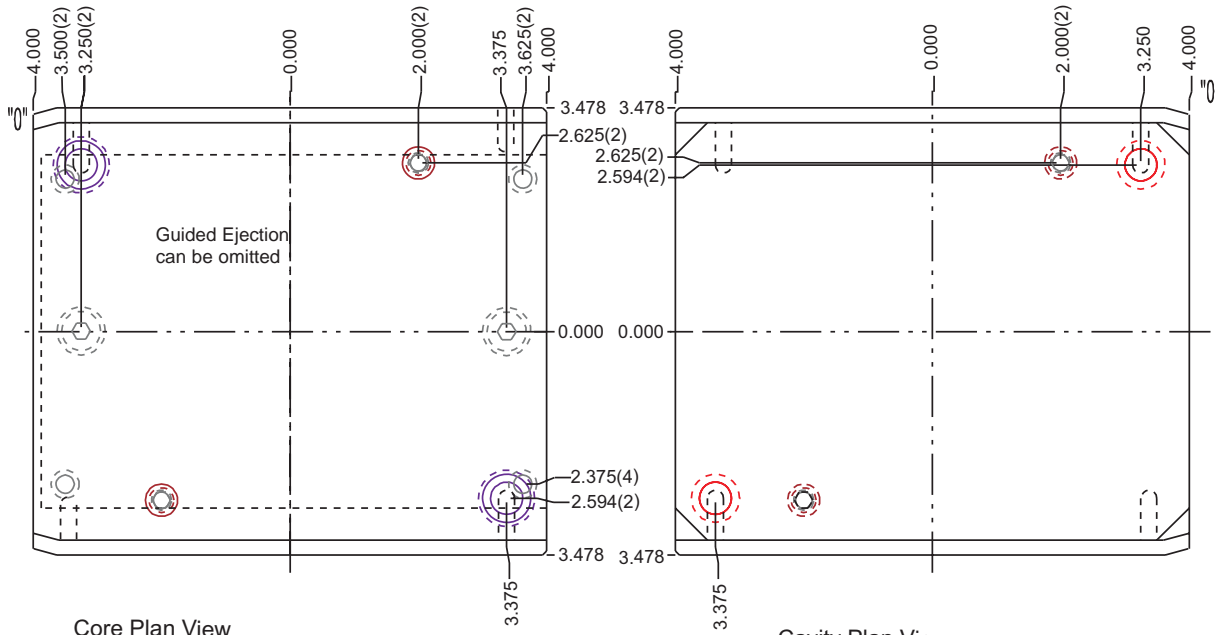
* ADD "G" TO END OF EJECTOR RETAINER AND EJECTOR PLATES TO OMIT GUIDED EJECTION I.E. 2ER-8490-04G



STANDARD FEATURES

- A & B Plates #3 Steel / All others #2 Steel
- Guided Ejection included at no extra charge
- Return Pins & Additional Leader Pins available

84/90 Series
6.5 x 8 Laminated



| REPLACEMENT PLATES | | |
|--------------------|-----------------|----------------|
| DESCRIPTION | PLATE THICKNESS | CATALOG NUMBER |
| A PLATE | 7/8 | 3AL-8490-07 |
| | 1-3/8 | 3AL-8490-13 |
| | 1-7/8 | 3AL-8490-17 |
| B PLATE | 7/8 | 3BL-8490-07 |
| | 1-3/8 | 3BL-8490-13 |
| | 1-7/8 | 3BL-8490-17 |
| SUPPORT PLATE | 1 | 2SP-8490-10 |
| RETAINER PLATE | 1/2 | 2ER-8490-04 |
| EJECTOR PLATE | 1/2 | 2EP-8490-04 |

| COMPLETE ASSEMBLY | | |
|-------------------|-------|-------|
| CATALOG NUMBER | A | B |
| FTL-8490-281 | 0.876 | 0.876 |
| FTL-8490-282 | 0.876 | 1.376 |
| FTL-8490-283 | 1.376 | 0.876 |
| FTL-8490-284 | 1.376 | 1.376 |
| FTL-8490-285 | 1.376 | 1.876 |
| FTL-8490-286 | 1.876 | 1.376 |
| FTL-8490-287 | 1.876 | 1.876 |

* ADD "G" TO END OF EJECTOR RETAINER AND EJECTOR PLATES TO OMIT GUIDED EJECTION I.E. 2ER-8490-04G

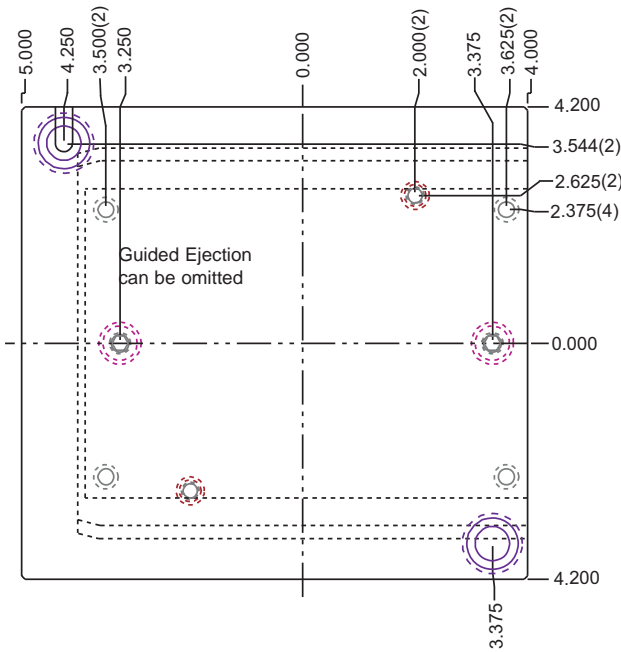


84/90 Series

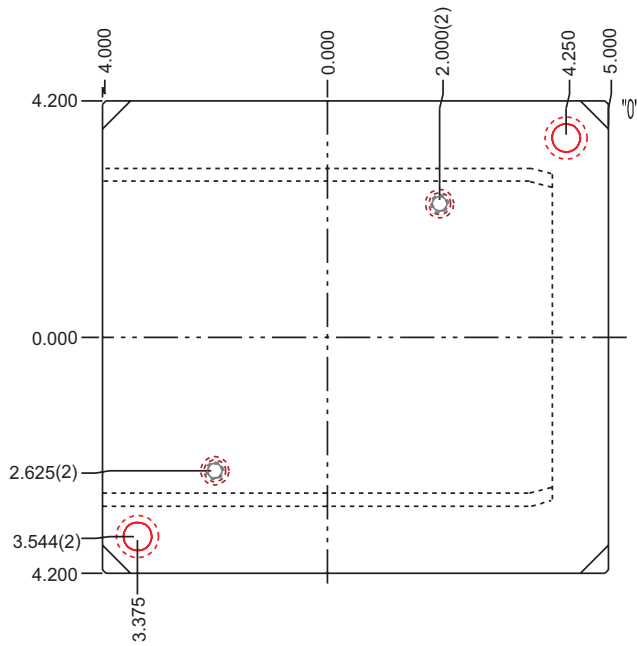
8.4 x 9 T-Style

STANDARD FEATURES

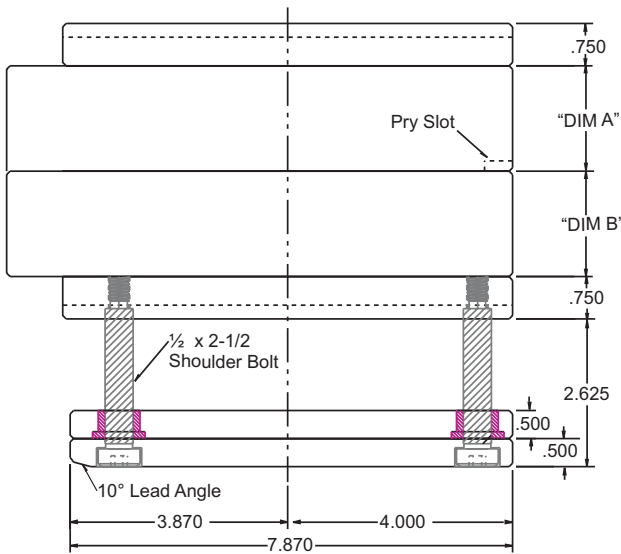
- A & B Plates #3 Steel / All others #2 Steel
- Guided Ejection included at no extra charge
- Return Pins & Additional Leader Pins available



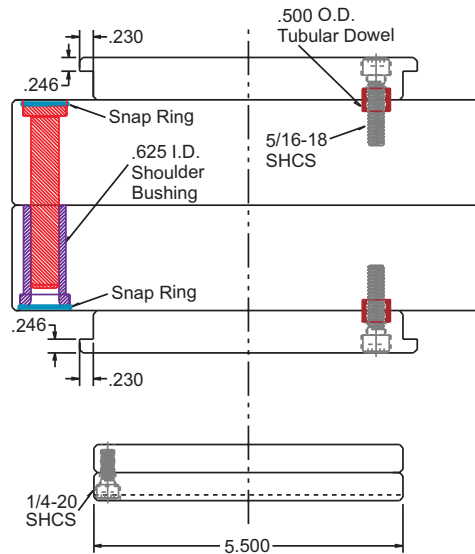
Core Plan View



Cavity Plan View



Section View



End View

| COMPLETE ASSEMBLY | | |
|-------------------|-------|-------|
| CATALOG NUMBER | A | B |
| FTT-8490-204 | 1.251 | 1.251 |
| FTT-8490-206 | 1.501 | 1.501 |
| FTT-8490-207 | 1.876 | 1.876 |

| REPLACEMENT PLATES | | |
|--------------------|-----------------|----------------|
| DESCRIPTION | PLATE THICKNESS | CATALOG NUMBER |
| A PLATE | 1-1/4 | 3AT-8490-12 |
| | 1-1/2 | 3AT-8490-14 |
| | 1-7/8 | 3AT-8490-17 |
| B PLATE | 1-1/4 | 3BT-8490-12 |
| | 1-1/2 | 3BT-8490-14 |
| | 1-7/8 | 3BT-8490-17 |
| SUPPORT PLATE | 3/4 | 2SP-8490-06 |
| RETAINER PLATE | 1/2 | 2ER-8490-04 |
| EJECTOR PLATE | 1/2 | 2EP-8490-04 |

* ADD "G" TO END OF EJECTOR RETAINER AND EJECTOR PLATES TO OMIT GUIDED EJECTION I.E. 2ER-8490-04G

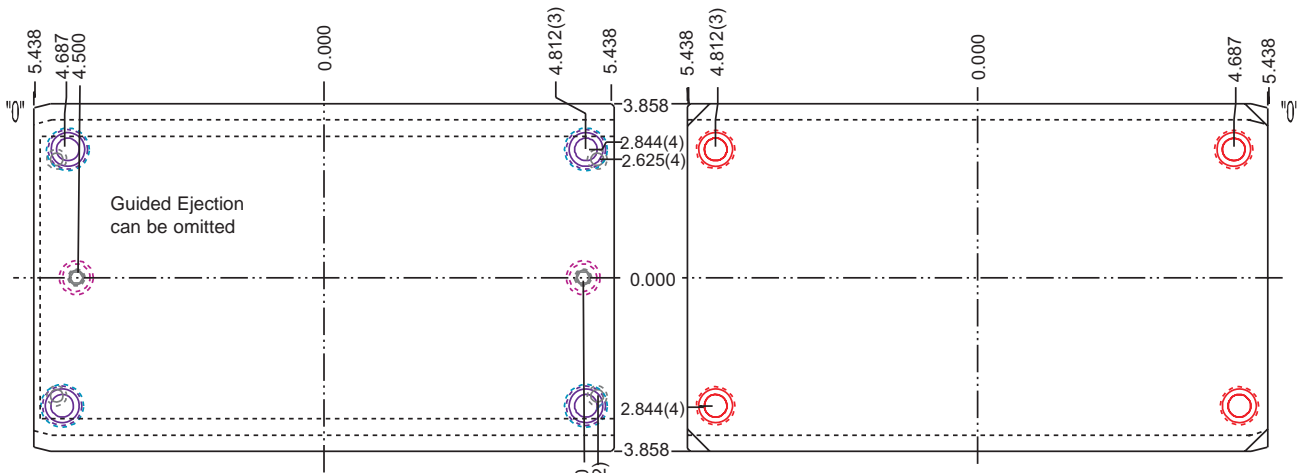


STANDARD FEATURES

- A & B Plates #3 Steel / All others #2 Steel
- Guided Ejection included at no extra charge
- Return Pins & Additional Leader Pins available

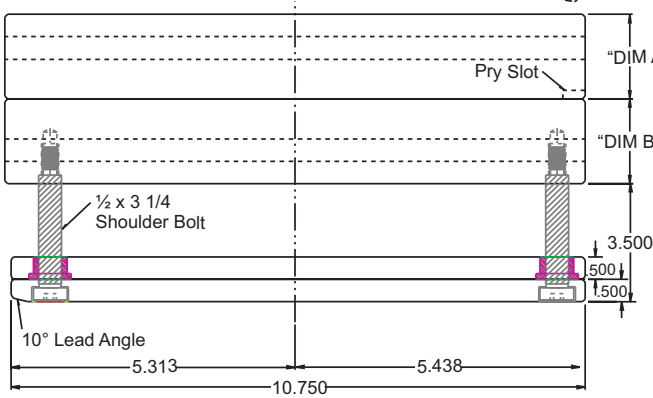
10/12 Series

7 x 10.9 Solid

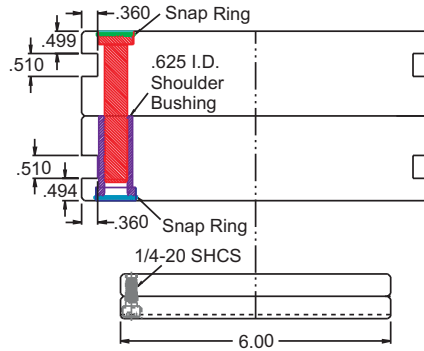


Core Plan View

Cavity Plan View



Section View



End View

| REPLACEMENT PLATES | | |
|--------------------|-----------------|----------------|
| DESCRIPTION | PLATE THICKNESS | CATALOG NUMBER |
| A PLATE | 1-7/8 | 3AS-1012-17 |
| | 2-3/8 | 3AS-1012-23 |
| B PLATE | 1-7/8 | 3BS-1012-17 |
| | 2-3/8 | 3BS-1012-23 |
| RETAINER PLATE | 1/2 | 2ER-1012-04 |
| EJECTOR PLATE | 1/2 | 2EP-1012-04 |

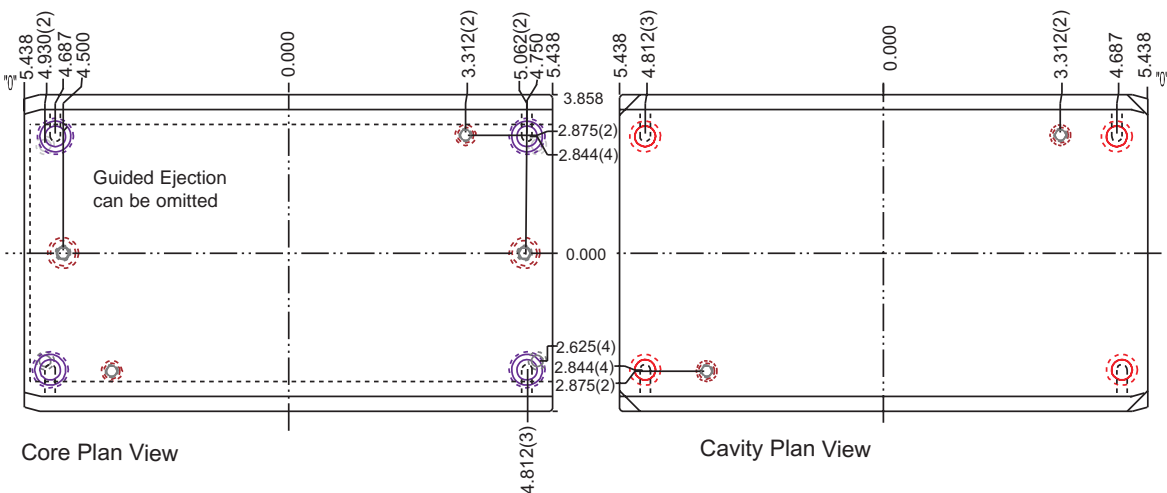
| COMPLETE ASSEMBLY | | |
|-------------------|-------|-------|
| CATALOG NUMBER | A | B |
| FTS-1012-224 | 1.876 | 1.876 |
| FTS-1012-225 | 1.876 | 2.376 |
| FTS-1012-226 | 2.376 | 1.876 |
| FTS-1012-227 | 2.376 | 2.376 |

* ADD "G" TO END OF EJECTOR RETAINER AND EJECTOR PLATES TO OMIT GUIDED EJECTION I.E. 2ER-1012-04G

10/12 Series

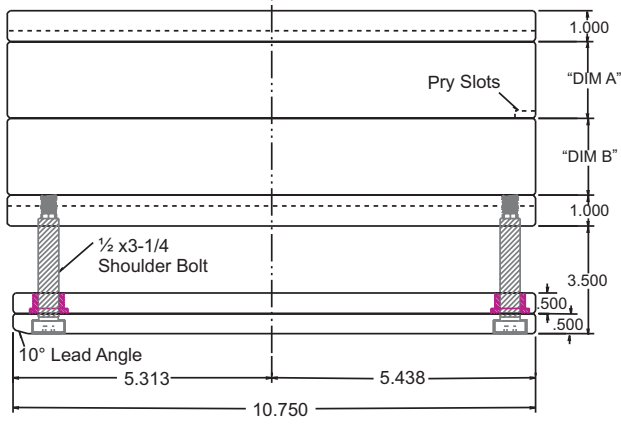
7 x 10.9 Laminated

- STANDARD FEATURES**
- A & B Plates #3 Steel / All others #2 Steel
 - Guided Ejection included at no extra charge
 - Return Pins & Additional Leader Pins available

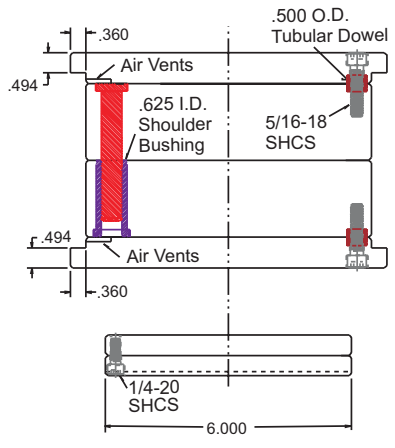


Core Plan View

Cavity Plan View



Section View



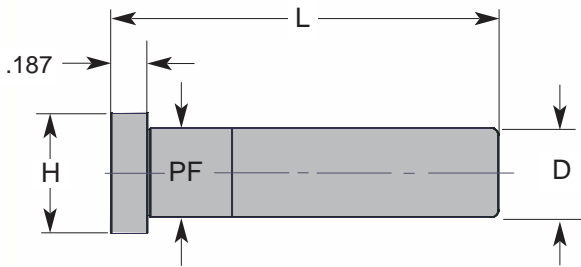
End View

| COMPLETE ASSEMBLY | | |
|-------------------|-------|-------|
| CATALOG NUMBER | A | B |
| FTL-1012-285 | 1.376 | 1.376 |
| FTL-1012-286 | 1.376 | 1.876 |
| FTL-1012-288 | 1.876 | 1.376 |
| FTL-1012-289 | 1.876 | 1.876 |

| REPLACEMENT PLATES | | |
|--------------------|-----------------|----------------|
| DESCRIPTION | PLATE THICKNESS | CATALOG NUMBER |
| A PLATE | 1-3/8 | 3AL-1012-13 |
| | 1-7/8 | 3AL-1012-17 |
| B PLATE | 1-3/8 | 3BL-1012-13 |
| | 1-7/8 | 3BL-1012-17 |
| SUPPORT PLATE | 1 | 2SP-1012-10 |
| RETAINER PLATE | 1/2 | 2ER-1012-04 |
| EJECTOR PLATE | 1/2 | 2EP-1012-04 |

* ADD "G" TO END OF EJECTOR RETAINER AND EJECTOR PLATES TO OMIT GUIDED EJECTION I.E. 2ER-1012-04G



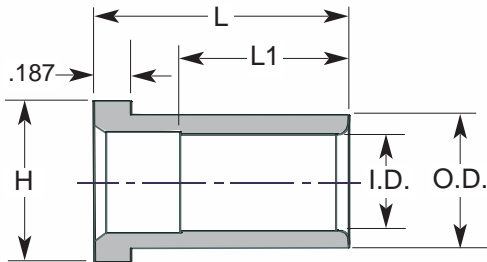


| GENERAL DIMENSIONS | | | |
|--------------------|-------|-------|------|
| NOMINAL DIAMETER | D | PF | H |
| 1/2 | .4990 | .5005 | .750 |
| 5/8 | .6240 | .6255 | .875 |

| CATALOG NUMBER | D | L |
|----------------|-----|-------|
| FL-50-20 | 1/2 | 2.000 |
| FL-50-22 | | 2.250 |
| FL-50-23 | | 2.375 |
| FL-50-24 | | 2.500 |
| FL-50-26 | | 2.750 |
| FL-50-27 | | 2.870 |
| FL-50-30 | | 3.000 |
| FL-50-32 | | 3.250 |
| FL-50-33 | | 3.375 |

| CATALOG NUMBER | D | L |
|----------------|-----|-------|
| FL-62-14 | 5/8 | 1.500 |
| FL-62-20 | | 2.000 |
| FL-62-22 | | 2.250 |
| FL-62-24 | | 2.500 |
| FL-62-26 | | 2.750 |
| FL-62-30 | | 3.000 |
| FL-62-32 | | 3.250 |
| FL-62-34 | | 3.500 |
| FL-62-40 | | 4.000 |

Shoulder Bushings

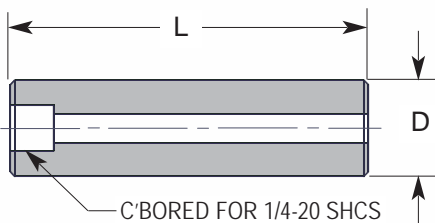


| GENERAL DIMENSIONS | | | | |
|--------------------|-------|-------|-------|------|
| NOMINAL DIAMETER | I.D. | O.D. | H | L1 |
| 1/2 | .5005 | .7505 | .875 | 1.00 |
| 5/8 | .6255 | .8755 | 1.125 | 1.25 |

| CATALOG NUMBER | D | L |
|----------------|-----|------|
| FB-50-07 | 1/2 | .77 |
| FB-50-10 | | .90 |
| FB-50-11 | | 1.02 |
| FB-50-12 | | 1.15 |
| FB-50-13 | | 1.27 |
| FB-50-15 | | 1.52 |
| FB-50-17 | | 1.77 |
| FB-50-21 | | 2.02 |

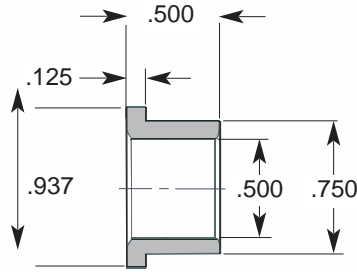
| CATALOG NUMBER | D | L |
|----------------|-----|------|
| FB-62-07 | 5/8 | .77 |
| FB-62-10 | | .90 |
| FB-62-11 | | 1.02 |
| FB-62-12 | | 1.15 |
| FB-62-13 | | 1.27 |
| FB-62-15 | | 1.52 |
| FB-62-17 | | 1.77 |
| FB-62-21 | | 2.02 |

Support Pillars



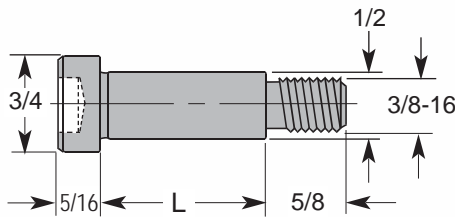
| CATALOG NUMBER | D | L |
|----------------|-------|-------|
| FZ-07-26 | 3/4 | 2.625 |
| FZ-07-35 | 3/4 | 3.500 |
| FZ-10-26 | 1 | 2.625 |
| FZ-10-35 | 1 | 3.500 |
| FZ-12-26 | 1-1/4 | 2.625 |
| FZ-12-35 | 1-1/4 | 3.500 |

Oillite G.E. Bushing



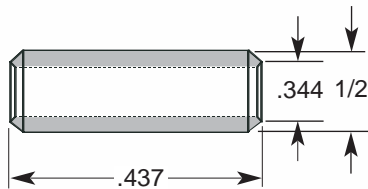
| CATALOG NUMBER |
|----------------|
| FE-50-50 |

Socket Head Shoulder Screws



| CATALOG NUMBER | L |
|----------------|-------|
| FSB33-2500 | 2-12 |
| FSB33-3250 | 3-1/4 |

Tubular Dowel



| CATALOG NUMBER |
|----------------|
| TD5-437 |

Snap Rings

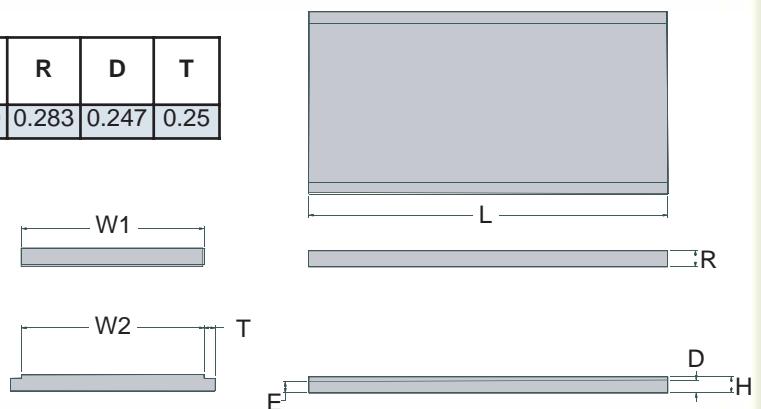


| CATALOG NUMBER | PIN OR BUSHING DIA |
|----------------|--------------------|
| HO-75 | 3/4 |
| HO-87 | 7/8 |
| HO-112 | 1-1/8 |

Sleeve Ejector Plate Sets

| CATALOG NUMBER | W1 | W2 | L | R | H | R | D | T |
|----------------|------|------|------|-------|-------|-------|-------|------|
| 1SE-0809-72 | 4.00 | 4.00 | 7.88 | 0.360 | 0.360 | 0.283 | 0.247 | 0.25 |

• Mild Steel



Save

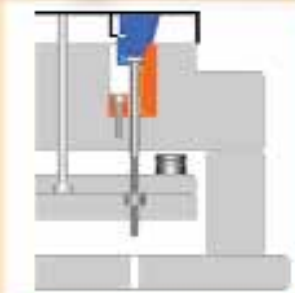


Time & Space!

View these products working in animated molds online!



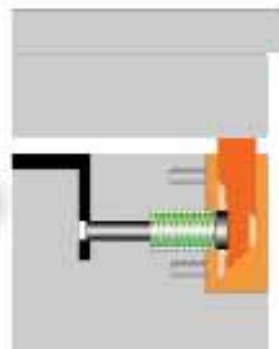
Vertical Lifter Block



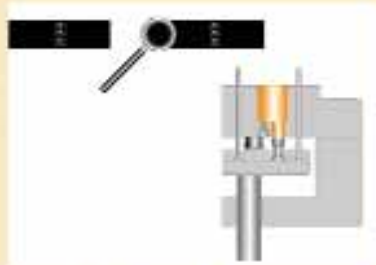
- Activated by the ejector plates
- Works in a simple vertical motion
- Self Contained
- Easy to install
- Available off the shelf



Compact Coring Unit



- Cores out holes with a maximum 4mm part thickness
- Easy to install from outside the mold, all installation is contained on one half of the mold



Traceability Marker

- Identify each plastic part with it's own serial number during molding, without additional manual operations
- The serial number cannot be manipulated, thus, allowing for total production control

Looking for more info? visit www.pcs-company.com

Fraser, MI Grand Rapids, MI Corona, CA Dayton, OH Woodbridge, Canada Hong Kong

PCS
COMPANY

The Global Standard for Quality, Service & Support

www.pcs-company.com
800-521-0546